



Virginia Department of  
Emergency Management

---

# VEST Overview for Private Sector

Date: February 29, 2024



Virginia Department of  
Emergency Management

---

# Virginia Emergency Support Team

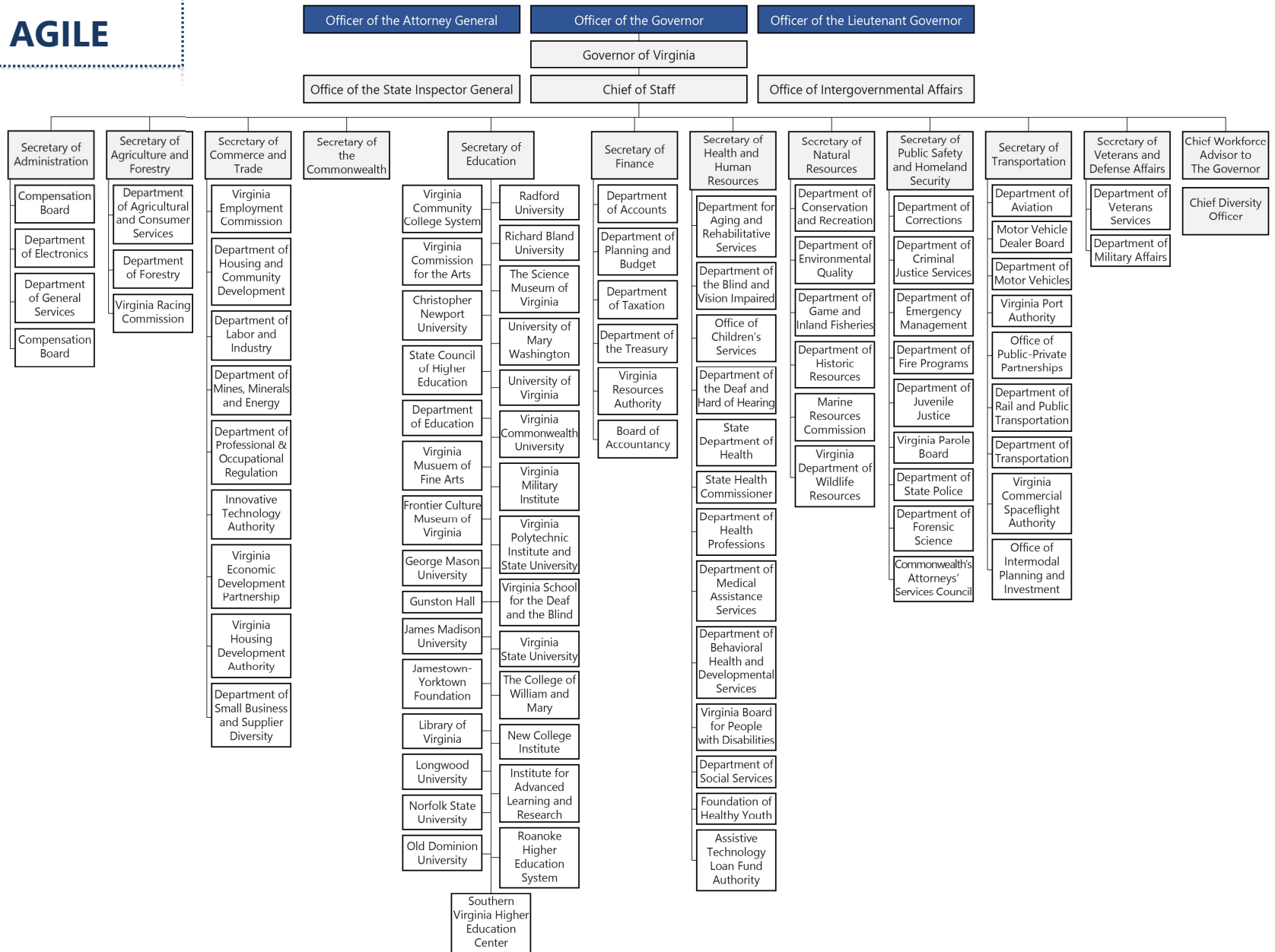
# Virginia Emergency Support Team

The mission of the Virginia Emergency Support Team (VEST) is *to collaboratively respond to disasters and emergencies faced in the Commonwealth in an effort to best support all local, state, tribal, and territorial governments protect the lives and property of the citizens of Virginia.*

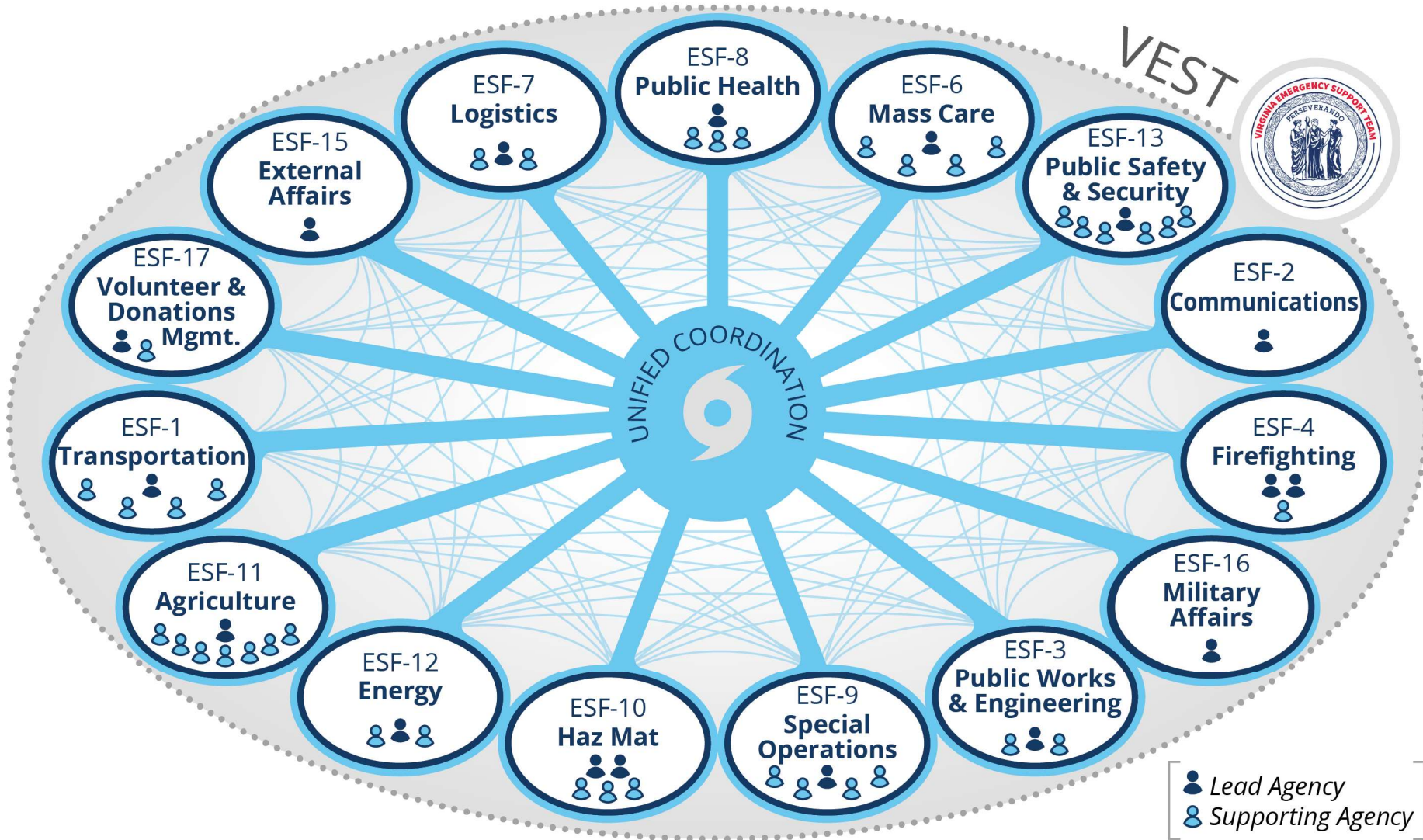
- 300+ Trained Members – 100+ State Agencies, Non-profit entities, and private sector partners
- Operationalize the Commonwealth of Virginia Emergency Operations Plan (COVEOP)
- Coordinate and support overall activities related to disaster response and recovery in support of local governments.
- Core management & administrative functions
- Information sharing upward (State Leadership), laterally (State Agencies/Local Governments) & downward (individual citizen).
- Bi-monthly Training and Exercise
- VESTEX & VOPEX



# BUREAUCRACIES AREN'T AGILE



# Complexity requires a coordinated, resilient approach



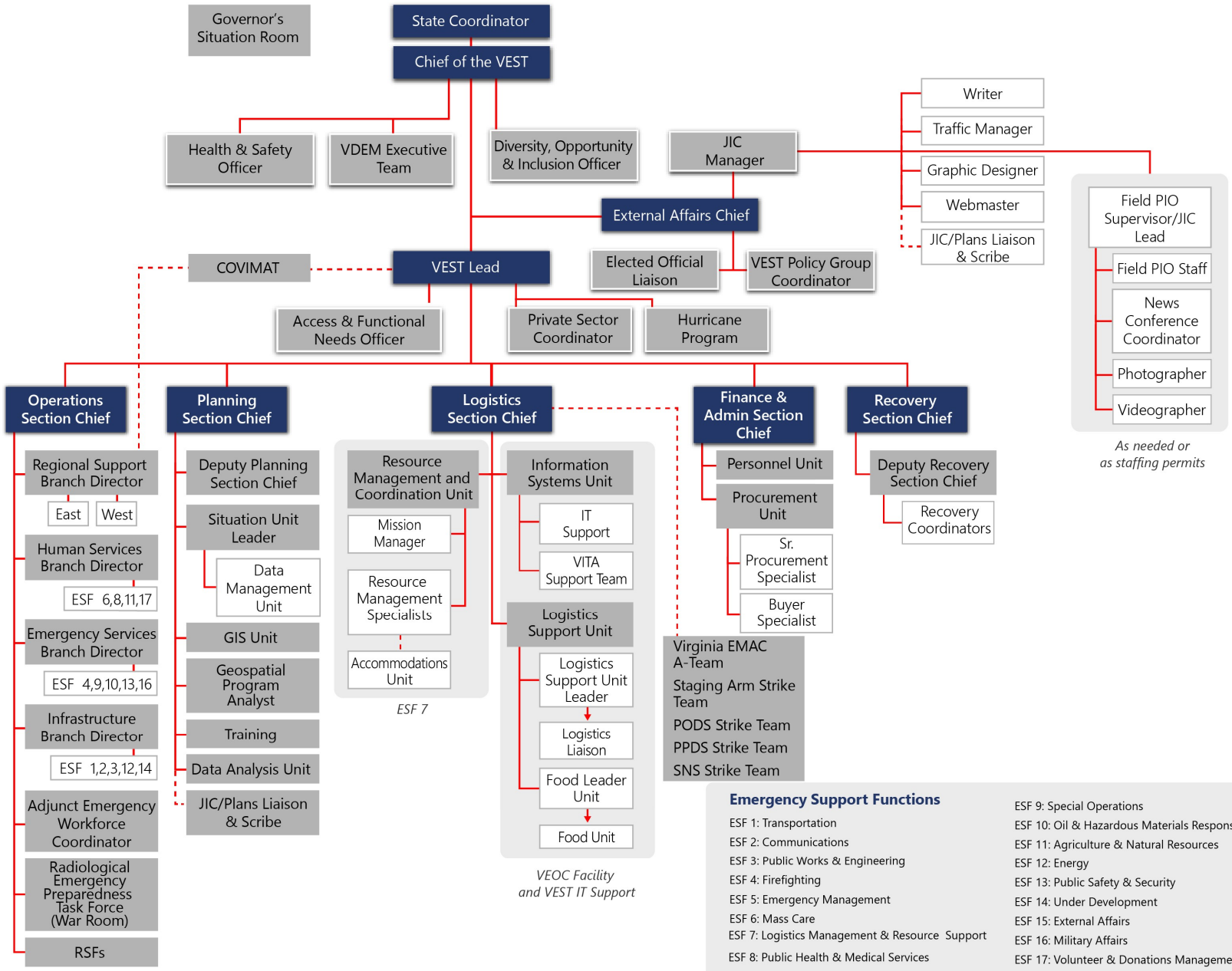
EMERGENCY SUPPORT FUNCTION	LEAD STATE AGENCY	SUPPORTING AGENCIES
ESF 1 - TRANSPORTATION	Virginia Department of Transportation (VDOT)	<ul style="list-style-type: none"> <li>- Chesapeake Bay Bridge – Tunnel District (CBBT)</li> <li>- Department of Aviation (DOAV)</li> <li>- Department of General Services (DGS)</li> <li>- Department of Military Affairs (DMA)</li> <li>- Department of Mines, Minerals, and Energy (DMME)</li> <li>- Department of Motor Vehicles (DMV)</li> </ul> <ul style="list-style-type: none"> <li>- Department of Rail and Public Transportation (DRPT)</li> <li>- Virginia Department of Social Services (VDSS)</li> <li>- Virginia State Police (VSP)</li> <li>- Virginia Port Authority (VPA)</li> <li>- Virginia Department of Forestry (VDOF)</li> </ul>
ESF 2 - COMMUNICATIONS	Virginia Information Technologies Agency (VITA) Virginia Department of Emergency Management (VDEM)	<ul style="list-style-type: none"> <li>- Department of Game and Inland Fisheries (DGIF)</li> <li>- Department of Military Affairs (DMA)</li> <li>- Virginia Marine Resources Commission (VMRC)</li> <li>- Virginia Department of Health (VDH)</li> </ul> <ul style="list-style-type: none"> <li>- Radio Amateur Civil Emergency Services (RACES)</li> <li>- Virginia State Police (VSP)</li> <li>- Other State Agencies with Communications Assets</li> </ul>
ESF 3 - PUBLIC WORKS & ENGINEERING	Virginia Department of Health (VDH)	<ul style="list-style-type: none"> <li>- Department of General Services (DGS)</li> <li>- Professional Engineers Emergency Response Team (PERT)</li> <li>- Department of Mines, Minerals, and Energy (DMME)</li> <li>- Department of Housing and Community Development (DHCD)</li> <li>- Department of Environmental Quality (DEQ)</li> <li>- Virginia Department of Emergency Management (VDEM)</li> </ul> <ul style="list-style-type: none"> <li>- Virginia Department of Transportation (VDOT)</li> <li>- Virginia Department of Forestry (VDOF)</li> <li>- Virginia Water/Wastewater Agency Response Network (VAWARN)</li> <li>- Department of Conservation and Recreation (DCR)</li> <li>- Department of Historic Resources (DHR)</li> </ul>
ESF 4 - FIREFIGHTING	Virginia Department of Fire Programs (VDFFP) Virginia Department of Forestry (VDOF)	<ul style="list-style-type: none"> <li>- Department of Conservation and Recreation (DCR)</li> <li>- Department of Military Affairs (DMA)</li> <li>- Virginia Department of Transportation (VDOT)</li> <li>- Department of Corrections (DOC)</li> </ul> <ul style="list-style-type: none"> <li>- Department of Game and Inland Fisheries (DGIF)</li> <li>- Virginia Marine Resource Commission (VMRC)</li> <li>- Virginia State Police (VSP)</li> <li>- Department of Mines, Minerals, and Energy (DMME)</li> </ul>
ESF 6 - MASS CARE, EMERGENCY ASSISTANCE, HOUSING & HUMAN SERVICES	Virginia Department of Social Services (VDSS)	<ul style="list-style-type: none"> <li>- Virginia Department of Agriculture and Consumer Services (VDACS)</li> <li>- Department of Behavioral Health and Developmental Services (DBHDS)</li> <li>- Department of Criminal Justice Services (DCJS)</li> <li>- Virginia Department of Emergency Management (VDEM)</li> <li>- Department of General Services (DGS)</li> <li>- Department of Housing and Community Development (DHCD)</li> <li>- Department of Military Affairs (DMA)</li> <li>- Office of the Attorney General (OAG)</li> </ul> <ul style="list-style-type: none"> <li>- Virginia Criminal Injuries Compensation Fund (VICIF)</li> <li>- Virginia Information Technologies Agency (VITA)</li> <li>- Virginia State Police (VSP)</li> <li>- Virginia Voluntary Organizations Active in Disaster (VAVOAD)</li> <li>- Virginia Department of Health (VDH)</li> <li>- Virginia Public Institutions of Higher Education</li> <li>- Department of Human Resource Management (DHRM)</li> <li>- Virginia Department of Deaf and Hard of Hearing (VDDHH)</li> </ul>
ESF 7 - LOGISTICS & RESOURCE SUPPORT	Virginia Department of Emergency Management (VDEM)	<ul style="list-style-type: none"> <li>- Department of Corrections (DOC)</li> <li>- Department of Criminal Justice Services (DCJS)</li> <li>- Virginia Department of Fire Programs (VDFFP)</li> <li>- Department of General Services (DGS)</li> </ul> <ul style="list-style-type: none"> <li>- VDEM Disaster Service Contractors</li> <li>- Private Sector Partnerships</li> <li>- All other state agencies not listed when applicable</li> </ul>
ESF 8 - PUBLIC HEALTH	Virginia Department of Health (VDH)	<ul style="list-style-type: none"> <li>- Virginia Department of Agriculture and Consumer Services (VDACS)</li> <li>- Department of Behavioral Health and Developmental Services (DBHDS)</li> <li>- Department of Environmental Quality (DEQ)</li> <li>- Department of Game and Inland Fisheries (DGIF)</li> <li>- Department of General Services (DGS)</li> </ul> <ul style="list-style-type: none"> <li>- Department of Military Affairs (DMA)</li> <li>- Department of Social Services (VDSS)</li> <li>- Virginia State Police (VSP)</li> <li>- Virginia Voluntary Organizations Active in Disaster (VAVOAD)</li> <li>- Department of Health Professions (DHP)</li> </ul>
ESF 9 - SEARCH & RESCUE	Virginia Department of Emergency Management (VDEM)	<ul style="list-style-type: none"> <li>- Department of Conservation and Recreation (DCR)</li> <li>- Virginia Department of Fire Programs (VDFFP)</li> <li>- Virginia Department of Forestry (VDOF)</li> <li>- Department of Game and Inland Fisheries (DGIF)</li> <li>- Virginia Marine Resources Commission (VMRC)</li> </ul> <ul style="list-style-type: none"> <li>- Virginia State Police (VSP)</li> <li>- Department of Military Affairs (DMA)</li> <li>- Civil Air Patrol (CAP)</li> <li>- Virginia Search and Rescue Council Organizations</li> </ul>
ESF 10 - OIL & HAZARDOUS MATERIALS	Virginia Department of Emergency Management (VDEM) Virginia Department of Environmental Quality (DEQ)	<ul style="list-style-type: none"> <li>- Virginia Department of Health (VDH)</li> <li>- Department of Game and Inland Fisheries (DGIF)</li> </ul> <ul style="list-style-type: none"> <li>- Department of Mines, Minerals, and Energy (DMME)</li> </ul>
ESF 11 - AGRICULTURE & NATURAL RESOURCES	Virginia Department of Agriculture and Consumer Services (VDACS)	<ul style="list-style-type: none"> <li>- Department of Conservation and Recreation (DCR)</li> <li>- Department of Environmental Quality (DEQ)</li> <li>- Virginia Department of Forestry (VDOF)</li> <li>- Department of Game and Inland Fisheries (DGIF)</li> <li>- Department of General Services (DGS)</li> <li>- Virginia Department of Health (VDH)</li> </ul> <ul style="list-style-type: none"> <li>- Department of Historic Resources (DHR)</li> <li>- Virginia Department of Social Services (VDSS)</li> <li>- Virginia Department of Transportation (VDOT)</li> <li>- Virginia Marine Resources Commission (VMRC)</li> <li>- Library of Virginia (LVA)</li> <li>- Virginia Cooperative Extension (VCE)</li> </ul>
ESF 12 - ENERGY	Virginia Department of Emergency Management (VDEM)	<ul style="list-style-type: none"> <li>- Department of Mines, Minerals and Energy (DMME)</li> <li>- State Corporation Commission (SCC)</li> <li>- Virginia Electric Cooperatives</li> </ul> <ul style="list-style-type: none"> <li>- Dominion Virginia Power</li> <li>- Appalachian Power Company (APCO)</li> </ul>
ESF 13 - PUBLIC SAFETY & SECURITY	Virginia State Police (VSP)	<ul style="list-style-type: none"> <li>- Department of Alcoholic Beverage Control (ABC)</li> <li>- Department of Conservation and Recreation (DCR)</li> <li>- Department of Corrections (DOC)</li> <li>- Department of Forestry (VDOF)</li> </ul> <ul style="list-style-type: none"> <li>- Department of Game and Inland Fisheries (DGIF)</li> <li>- Department of Military Affairs (DMA)</li> <li>- Department of Motor Vehicles (DMV)</li> <li>- Virginia Department of Transportation (VDOT)</li> </ul>
ESF 15 - EXTERNAL AFFAIRS	Virginia Department of Emergency Management (VDEM)	<ul style="list-style-type: none"> <li>- All Agencies of the Commonwealth of Virginia</li> </ul>
ESF 16 - MILITARY AFFAIRS	Department of Military Affairs (DMA)	<ul style="list-style-type: none"> <li>- Joint Force Headquarters – Virginia</li> <li>- Joint Force Headquarters – Joint Operations Center (JFHQ-JOC)</li> <li>- Virginia Army National Guard</li> </ul> <ul style="list-style-type: none"> <li>- Virginia Air National Guard</li> <li>- Virginia Defense Force</li> <li>- 34th Civil Support Team (CST) CBRNE Response Force Package</li> </ul>
ESF 17 - VOLUNTEER & DONATIONS MANAGEMENT	Virginia Department of Emergency Management (VDEM)	<ul style="list-style-type: none"> <li>- Virginia Voluntary Organizations Active in Disasters (VAVOAD)</li> </ul> <ul style="list-style-type: none"> <li>- Adventist Community Services (ACS)</li> </ul>

# Commonwealth of Virginia Emergency Operations Plan (COVEOP)

- Framework for how the Commonwealth supports local governments, individuals, and businesses
- Improves capability to respond to and recover from disasters
- Emergency Management = Whole of Government responsibility
- Promulgated by Governor every 4 years
- Identifies roles and responsibilities of all Executive Branch State Agencies
- Identifies command and control
- Emergency Support Function responsibilities
- <https://www.vaemergency.gov/agency/planning/>

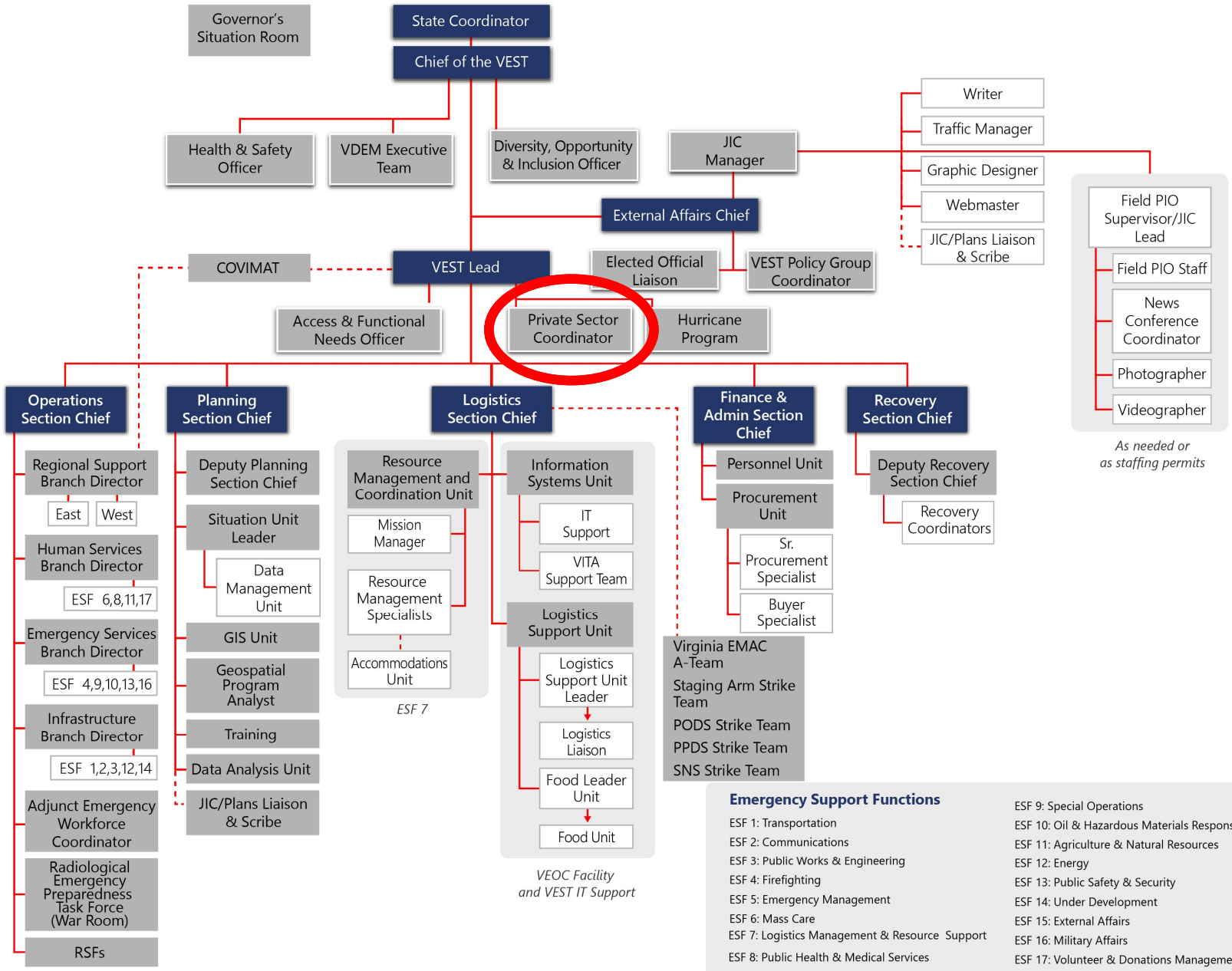


# Typical VEST Structure (as of 6/1/23)





# Typical VEST Structure (as of 6/1/23)



# Private Sector Coordination

- “Blue Sky” Days:
  - Relationship Building
  - ENDEAVOR- Virginia
  - Locality coordination discussions
- “Gray Sky” Days:
  - VEST Private Sector Liaison – 3 person rotating team
  - Share information
  - Coordinate/Communicate Needs



# VEST Private Sector Liaison

- Liaise between Private Sector and Government
- Share VEST products (Storyboards/Situation Reports) through VEST Private Sector Advisory Portal
- Coordinate donations/resource needs with Logistics section and ESF #17: Volunteer and Donations Management
- Update Website
- Coordinate calls, as needed



# VDEM Daily Situation Report

## VDEM Daily Situational Report: 0800, Saturday, September 23, 2023

### Current Watches, Warnings, and Advisories

Current Watches, Warnings, and Advisories

0-72hour Precipitation Amount

VDEM Regions

### Precipitation

Day 1, Day 2, Day 3

### Severe Weather

Day 1 Convective Outlook, Day 2 Convective Outlook

### Regional Weather

**Northern VA (R2/R7):** Rain and Windy, PM Chance Rain and Breezy. High: 65°F, Low: 59°F  
**Richmond/Norfolk (R1/R5):** Heavy Rain and Windy, PM Heavy Rain. High: 72°F, Low: 60°F  
**Roanoke/Lynchburg/ Wythe (R3/R4):** Rain Likely, PM Rain Likely. High: 62°F, Low: 53°F  
**SWVA/Bristol (R4):** Sunny, PM Mostly Clear. High: 78°F, Low: 54°F  
**SWVA/Buchanan (R4):** Slight Chance Rain, PM Slight Chance Rain then Mostly Cloudy. High: 70°F, Low: 56°F

See Current Watches/Warnings for weather advisories

### Commonwealth Summary

**VEOC Status: Fully Activated**

On-going Significant Incidents:

- VEST transitioned to Red/ Fully Activated due to threat of severe weather to the Commonwealth.

Weather Assessment:

- Rain over southeastern Virginia will overspread the state today as Tropical Storm OPHELIA moves into the region. Lingering showers will be possible tomorrow, improving conditions will begin building across the Commonwealth as the system moves off towards the northeast. Finally, mainly dry weather is expected statewide on Monday, but an isolated shower or thunderstorm could still occur along either the coast or over the Blue Ridge Mountains.

Current Watches/Warnings:

- R1 – Flood Watch in effect
- R2 – Wind Advisory and Flood Watch in effect
- R3 – Flood Watch in effect for areas of the region
- R5 – Tropical Storm Warning in effect for Southeastern R5 localities; Flood Watch in effect for the region
- R7 – Coastal Flood advisory and Wind advisory in effect

VEOST Operational/Planning Posture:

- Core Team C is on call, prepared to support VDEM Regions and State Agencies as needed.

VDEM Regional Activities:

- NSTR

Hurricane Program Updates:

- See Page 2 for Hurricane Program information.

### Significant Activity Last 24 Hours

Incident #	CIR	Description/Comments/Disposition
1.10		VEST transitioned to Red/Fully Activated due to threat of severe weather
1.7		State of emergency declared by localities (3 localities)
1.8		State of emergency Declared by surrounding state (2 states)
1.9		Change in local EOC status (16 localities)
7.3		Local Emergency Shelter activated (2 localities)
8.2		Voluntary evacuation ordered (locally)
4.1		Utility outages affecting 10,000 customers or more (cumulative total from 13 localities in)

Prepared by: S. Moody, S. Peavy  
 Approved by: R. Burkholder  
 VDEM SAU, 800-468-8892, VEOC@VDEM.Virginia.Gov

UNCLASSIFIED

EOC Status		Response Teams Status	
FEMA R3	Monitoring	VANG 34 CST	Available
DC	Normal	VANG 34 CERFP	Available
MD	Enhanced Monitoring	REG HAZMAT TEAMS	Available
NC	Enhanced Watch	REG TECH RESCUE TEAMS	Available
TN	Normal	INCIDENT MGMT TEAMS	Available
KY	Normal	COMMS CACHE	Available
WV	Enhanced Watch		

EOC Communications			
PHONES	Active	EOC NETWORK	Active
STARS	Active	SAT PHONE	Active
COMLINC	Active	SITROOM VTC	Active
WEBEOC	Active	EOC VTC	Active
EOC HVAC	Active		

Major Upcoming Events		
Sept 22 – Oct 1	Virginia State Fair	Caroline County
Sept 26 – Oct 1	12th Annual Richmond International Film Festival	Richmond City
Sept 27	Octoberfest at Three Notch'd Brewery & Craft Kitchen	Nelson County
Sept 28 – Oct 8	2023 Outdoor Sculpture Exhibit	Portsmouth City
Sept 29 – Oct 1	Nepi Arts	
Sept 30	Town 150+	
Oct 6 – Oct 8	2023	

## VDEM Daily Situational Report: Hurricane Program Updates

### Storm Surge Forecast

Peak Storm Surge Forecast

Forecast Cone for Current Tropical System

Tropical Storm Ophelia

Current information: x  
 Center location 34.3 N 75.9 W  
 Maximum sustained wind 70 mph  
 Movement NNW at 8 mph

Forecast positions:  
 Tropical Cyclone  
 Sustained winds: T < 39 mph  
 S 39-73 mph, H 74-110 mph, M > 110 mph

Warnings: Current wind field estimate:  
 Hurricane, Tropical Storm, Hurricane, Tropical Storm

### Hurricane Program Update Summary

**Current Impact: Impacts to the Commonwealth**

The National Hurricane Center is tracking these systems/potential systems.

- Tropical Storm Ophelia: At approximately 0615 hours, Tropical Storm Ophelia made landfall near Emerald Isle, NC. Current intensity is 70 mph. Latest track shifts a little to the left (west) in North Carolina, but is more to the right in Virginia, passing further east from Richmond than previous few tracks. On the current track, Ophelia should pass between Richmond and Williamsburg around sunrise tomorrow as a weakened storm. Threats not changed a whole lot since yesterday, and one of the primary concerns is the large swath of 4-6 rainfall, which covers a large area from west of Richmond east. WPC has issued a moderate threat in the Excessive Rainfall Outlook for the Richmond metro area, and that risk area has been extended south this morning. Wind gusts of 40 mph are possible for the eastern third of the Commonwealth, with the highest gusts along the coast at 45-55 mph. Coastal flooding threat hasn't changed much since yesterday, and we are in the middle of the one of the high tide cycles now, and only two gauges have hit the major threshold (Lynchhaven and Jamestown). Next round of high tides are this afternoon and there are a few gauges forecast to reach the major threshold. It looks like some of the gauges have been a little lower than the forecast height. Threat for tornados still exists, but has diminished. Ophelia is forecast to become post tropical tomorrow afternoon and to dissipate by Monday, however, the remnants may hang around through Tuesday, and could result in overcast skies and chances of light showers, with overall rain amounts remaining light. Impacts to the Commonwealth are heavy rain with potential flash flooding, tropical storm gusts, moderate to major flooding, and limited tornado threat.

- Also, this low pressure system, located several hundred miles west of the Cabo Verde Islands, has a high chance of tropical cyclone development in the next couple of days, with latest data showing potential development later today. NHC chances of formation are 80% for 2 days and 90% for 7. Models currently show this recurring in the central Atlantic. No threat to the Commonwealth at this time.

### 2023 Atlantic Storm Names

ARLENE	Disipated	LEE	Disipated
BRET	Disipated	MARGOT	Disipated
CINDY	Disipated	NIGEL	Disipated
DON	Disipated	OPHELIA	Active
EMILY	Disipated	PHILIPPE	Available
FRANKLIN	Disipated	RINA	Available
GERT	Disipated	SEAN	Available
HAROLD	Disipated	TAMMY	Available
IDALIA	Disipated	VINCE	Available
JOSE	Disipated	WHITNEY	Available
KATIA	Disipated		

### BUILD AN EMERGENCY KIT

#### Virginia Hurricane Evacuation Guide

#### Virginia Hurricane Preparedness - Inland Impacts Guide



UNCLASSIFIED

# VEST Storyboard



UNCLASSIFIED

## 2023-09 Severe Weather

This product is designed to highlight VEST operations for VDEM executive leadership.  
Information cut off time: **September 23, 2023 at 12:00 pm**

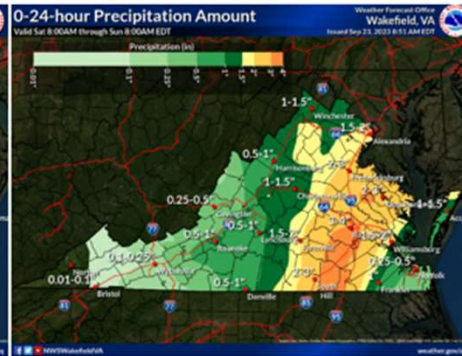
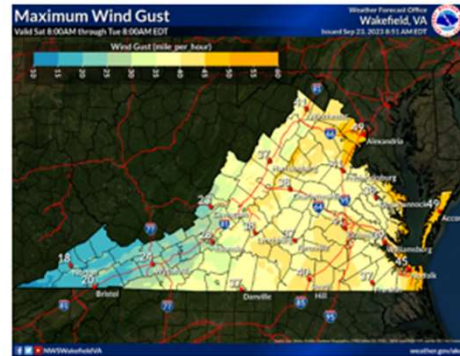
VEOC Status: Full Activation

### Overview

On Friday, September 22, 2023, the Commonwealth geared up for the impending impacts of Tropical Storm Ophelia. At 6:20 am on September 23, 2023, Tropical Storm Ophelia made landfall in Emerald Isle, NC, bringing wind gust speeds up to 45 to 50 mph and delivering 3 to 6 inches of rain. Moderate to Major tidal flooding is expected to occur the morning of September 23, 2023 and forecasted with high tides in the afternoon. Inundation of up to 2 to 4 feet above ground level is possible. There is an elevated risk of tornadoes in southeast VA/northeast NC, spreading further north into eastern VA and southeast MD by the afternoon.

### State Actions

- Governor Youngkin declared a State of Emergency on September 22, 2023 at 1:30 pm.
- **Virginia Emergency Support Team (VEST)** transitioned to Red (Full Activation) on September 22, 2023 at 7:00 pm.
- Region 5 RCC activated.
- VA National Guard Multi-Function Strike Teams
  - 1 in Hampton City and 1 in Suffolk City
- Swift Water Rescue Teams
  - VA State Police – 2 in Eastern Shore and 1 in Northern Neck
  - State – 4 in Williamsburg, Gloucester, Suffolk, and Chesapeake



Requests for Assistance	Local EOC Status	Local Declaration	Current Plans (12-48 hours)	Future Plans (48+ hours)	Power Outages
Total – 18 Completed – 1 Active – 15	Open – 1 Partial – 4 Monitoring – 13	Total – 9	<ul style="list-style-type: none"> <li>• Fulfilling requests for assistance</li> </ul>	<ul style="list-style-type: none"> <li>• Damage Assessment</li> <li>• Debris Management</li> <li>• Recovery</li> <li>• Demobilization</li> </ul>	Total – 17,752



# VEST Situation Report

## Virginia Emergency Support Team (VEST)

Situation Report # 2  
2023-09 Severe Weather  
September 23, 2023 as of 8:00 PM

### Summary

The Virginia Emergency Support Team (VEST) is preparing for the impacts of Tropical Storm Ophelia to the Commonwealth. On Friday, September 22, 2023, at 1:30 PM, Governor Youngkin declared a State of Emergency for the Commonwealth of Virginia due to the projected severe flooding and tropical storm impacts. At 6:20 AM on September 23, 2023, Tropical Storm Ophelia reached the shores of Emerald Isle, North Carolina. As of 5:00 PM, the storm's position was approximately 50 miles south of Richmond, slightly to the northeast of Empoia, with a northward movement at a rate of 12 mph. Its intensity is 40 mph. The latest trajectory update indicates that Tropical Storm Ophelia has shifted slightly westward and is expected to pass to the east of Richmond between 10:00 PM and 11:00 PM tonight.

### State Actions

- Emergency Declaration made on September 22 at 1:30 PM
- VEOC Status is Red: *Full Activation*
- A motor carrier waiver has been authorized by VDOT and Virginia DMV effective September 22 - 24, 2023.
- State assets deployed
  - Available Swift Water Assets have been identified; assets have either been prepositioned or noted as available statewide.
  - HART resources are available
- VANG assets have been pre-deployed to Tidewater Region.
- Crisis Track System (statewide) event established and synced with 3 local events (thus far)
- Port of Virginia facilities closed at 4 PM on September 22, and will remain closed on Saturday September 23.

### Local Actions

Source(s): WebEOC

VDEM Region	Local EOC's Open	Local Declarations
1	Rappahannock Tribe (Partial) King and Queen County (Monitoring) Colonial Heights City (Monitoring) Nottoway County (Monitoring) Richmond City (Virtual)	Rappahannock Tribe King and Queen County

VDEM Region	Local EOC's Open	Local Declarations
2	Orange County (Monitoring)	

VDEM Region	Local EOC's Open	Local Declarations
5	Franklin City (Monitoring) Isle of Wight (Virtual)	Chesapeake City Hampton City

## Virginia Emergency Support Team (VEST)

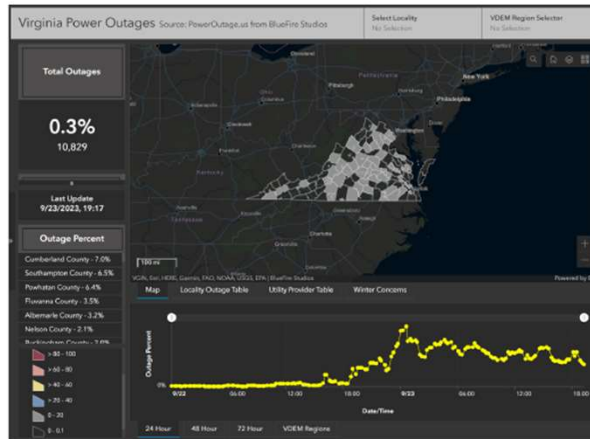
Lancaster County (Monitoring) Middlesex County (Monitoring) Newport News City (Virtual) Northumberland County (Monitoring) Poquoson City (Virtual) Richmond County (Monitoring) York County (Monitoring)	Isle of Wight Lancaster County Middlesex County Newport News City York County
--	---

Note: Hampton City issued a voluntary evacuation of an apartment complex in a low-lying area and coordinated transportation to shelter for those in need of assistance. **The complex did not experience flooding and residents were able to return on September 23.**

### Local Mass Care Operations

Jurisdiction	Number	Status	Occupancy
Hampton City	1	Closed	0
Newport News City	1	Closed	0

### Power Outage Information



## Virginia Emergency Support Team (VEST)

Infrastructure Branch			
ESF 01 as of: 09/23/2023 17:05:50	Transportation	Green: Clear, Open Yellow: Delays, Poor Conditions Red: Closure/Crash	All Air Carrier Airports are open. Travelers are encouraged to contact their airline for specific flight information.
	Airports	Green: Normal, Minor Yellow: Moderate Red: Severe	CBBT Restrictions - Advisory Level
	Interstates	Green: Open Yellow: Delays Red: Closure/Crash/Disruption	Amtrak cancellations in place prior to storm arrival.
	Railroad	Green: Open Yellow: Minor Issues Red: Extensive Outages	Port of Virginia Early Closure Friday, 9/22/2023; All Facilities Closed Saturday, 9/23/2023
	Maritime	Green: No Reported Issues Yellow: Some Issues Red: Extensive Outages	No incidents reported as of 6:30PM Saturday.
ESF 02 as of: 09/23/2023 18:34:59	Communications	Green: Normal Yellow: Minor Outages Red: Major Outage	No incidents reported as of 6:30PM Saturday.
	Telecommunications	Green: No Reported Issues Yellow: Some Issues Red: Extensive Outages	No incidents reported as of 6:30PM Saturday.
	Public Safety/911	Green: No Reported Issues Yellow: Some Issues Red: Extensive Outages	No incidents reported as of 6:30PM Saturday.
ESF 03 as of: 09/23/2023 17:08:02	Cyber/Internet/Cable	Green: No Reported Issues Yellow: Some Issues Red: Extensive Outages	No incidents reported as of 6:30PM Saturday.
	Public Works and Engineering	Green: Normal Yellow: Public Notices (road water) Red: No Services, Services Disrupted	No new EEI at 5 pm
	Drinking Water Systems	Green: Normal Yellow: Minor Disruption Red: No Service, Service Disrupted	One minor disruption (Blowing Green, precautionary, no change in capacity or unmet needs).
	Waste Water Systems	Green: Normal Yellow: Minor Damages, Closed	07/4 9/23/23 Rappahannock Tribe Govt closed.
	Public Infrastructure, Government Buildings/Facilities, Schools, Parks	Green: Normal Yellow: Minor Damages, Unusable, Destroyed	Region 1: Fredericksburg City Govt & K-12 schools closed. Region 2: Fredericksburg City Govt & K-12 schools closed. Region 5: Franklin City K-12 schools early release. Isle of Wight County K-12 schools early release. Richmond County Govt & K-12 schools closed. Middlesex County Govt & K-12 schools closed. Chincoteague Town Govt & K-12 schools closed. Poquoson City Govt & K-12 schools closed. Virginia Beach City K-12 schools modified schedule. York County K-12 schools early release. Newport News City K-12 schools closed. Northumberland Co Govt & K-12 schools closed.
ESF 12 as of: 09/23/2023 17:48:46	Energy	Green: Normal Yellow: Some Issues Red: Extensive Outages	As of 17:30, there are 11,992 customers without power in the Commonwealth.
	Power Distribution and Generation	Green: Normal Yellow: Minor Issues Red: Extensive Shortages	Transportation waivers distributed to industry sector partners. No unmet needs.



# VEST Private Sector Advisory Portal

Tool (Everbridge) that is used to communicate  
TO Private Sector



Sign In Sign Up Overview FAQs

? Help & Answers

## The Virginia Emergency Support Team (VEST) Private Sector Portal

By signing up through this portal, you are registering as a private sector partner to receive regular emails from the VEST during VEOC activations for emergencies, disasters, and planned events as well as important VA ENDEAVOR announcements.

Once registered, you will receive time-sensitive messages to the email address that you provide during registration.

If you have questions or resource needs, please contact the VEOC at [private\\_sector@vdem.virginia.gov](mailto:private_sector@vdem.virginia.gov)

### Sign in to your account

Username \*



# Communication to VEST

- Blue Sky Day – Jennifer Sharpe ☺
- Gray Sky Day (VEST Activations):
  - [Private.Sector@vdem.virginia.gov](mailto:Private.Sector@vdem.virginia.gov)
  - 804-371-7214





# THANK YOU!



Jennifer Sharpe,  
Operational Coordination Division Director  
804-351-7026  
Jennifer.Sharpe@VDEM.virginia.gov