



DISASTERS REQUIRE FASTER DECISIONS

But Can You Trust Your Data?



Weather data. Fuel and food availability. Road closures. These and dozens of other datasets factor into the decisions you make. You don't need more data. You need to know if the data you see is reliable.

The **Sensitive Information Sharing Environment (SISE)**, a legal framework operated by the **All Hazards Consortium (AHC)**, was created by industry to enable vetted stakeholders to see and share information and make more informed decisions before, during, and after an incident.

The SISE stakeholders realized that simply providing access to datasets wasn't enough. They needed to give decision-makers real clarity about the relative trustworthiness of the data. In response to this need, the **Operational Readiness Level Standard (ORL)** standard was developed.

The ORL Standard was developed to:

- Know which data is more reliable for operational decision-making
- Increase decision maker confidence in datasets
- Allow for operational data interoperability between organizations
- Be a simple and easy-to-understand standard
- Improve operational safety and efficiency by reducing risk

Find out how the SISE and the ORL can help you.
Go to www.siseusa.org and register for FREE today!

BENEFITS OF THE ORL

- Saves time in decision making
- Standardizes Data Reliability
- Increases your confidence in data
- Helps you make decisions faster
- Improves your operational decision making
- Reduces operational delays
- Enhances employee safety
- Avoids costly or embarrassing mistakes
- Growing adoption by industry and government



The ORL Lets YOU Decide What Data to Trust

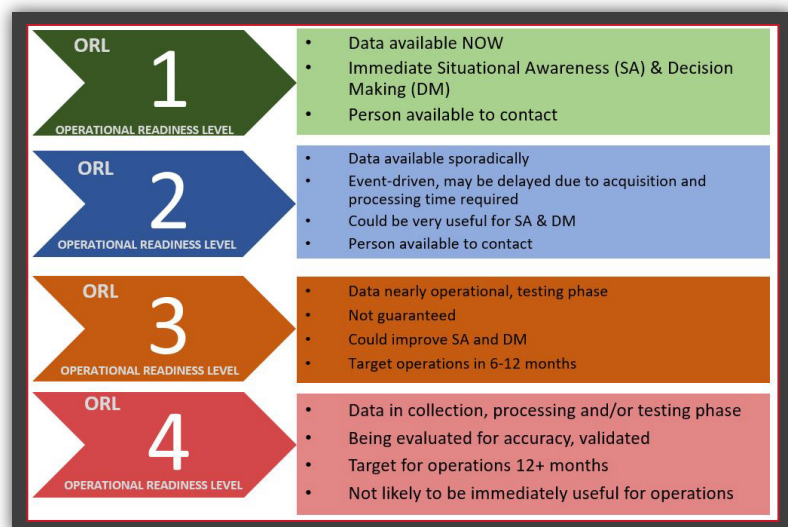
Evaluating Operational Reliability

Working together, a diverse set of public and private sector stakeholders developed use cases to address real world operational problems. These use cases identified the datasets needed as part of their decision-making process for several use cases in the electric sector.

This group of utilities and states worked together within the SISE to develop an operational data reliability standard that would address their collective needs. This federated agreement became the Operational Readiness Level Standard.

The Operational Readiness Level Standard

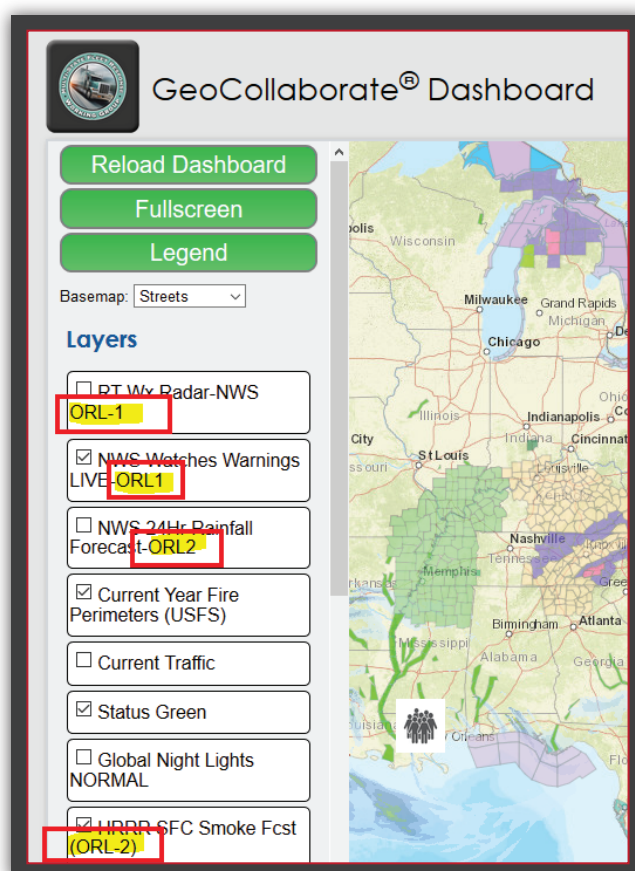
The ORL uses a simple standardized ranking system that is similar to one used by NASA to evaluate the operational reliability of a technological component. While there are many factors that go into setting the rating of a dataset, the operational leaders and GIS professionals that determine the rankings can quickly establish a ranking based on agreed upon standards.



Users that access ORL ranked datasets through the SISE, can see the ORL ranking of the data and decide if they want to trust it in making an operational decision. Sometimes the only data available may be ranked ORL 3 or 4. The users can decide for themselves if they want to proceed to use the data in a particular circumstance.

The SISE dashboards provide ORL ranked data sets that:

- Improve safety and restoration efforts
- Synch situational awareness between public and private sector stakeholders
- Create a unity of effort between industry and government response agencies
- Reduce disruptions to your operations and supply chain
- Enhance worker safety



Find out how the SISE and the ORL can help you.

Go to www.siseusa.org and register for FREE today!

