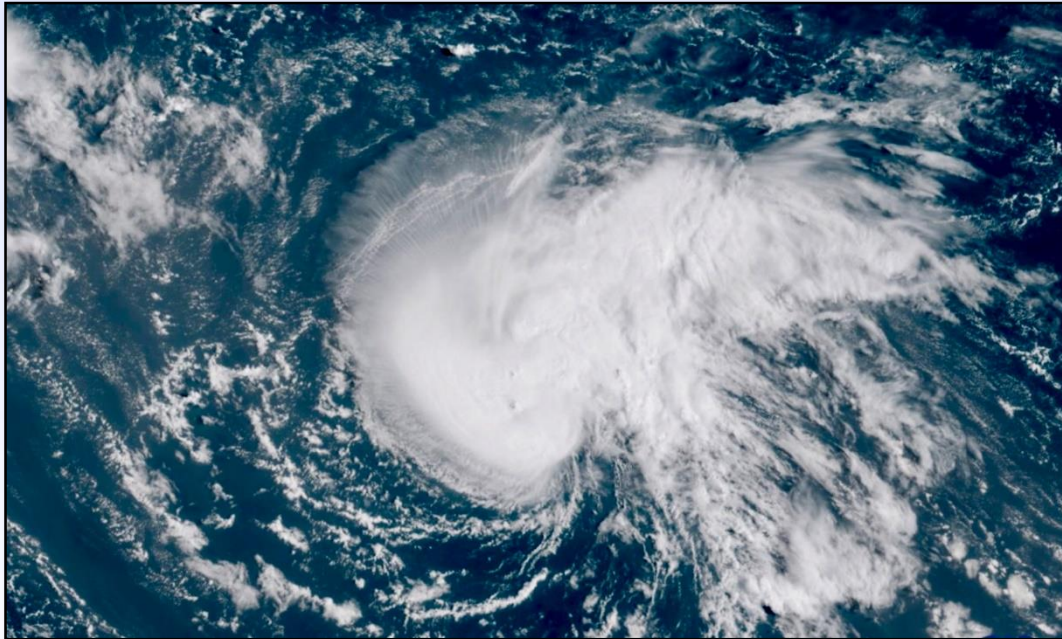


North Carolina State Emergency Operations Center



Hurricane Florence
Friday 14, September 2018 – 0700

State EOC Schedule

Friday, September 14, 2018

0700	Shift Brief
1000	Executive Summary Published
1130	Lunch
1600	Executive Summary & Situation Report Published
1600	Operational Planning Meeting
1730	Dinner
1900	Shift Brief



Administrative Details

- Event Name:
 - 20180907 Hurricane Florence
- Reported Costs to Date: **\$7,937,733**
- Reminders:
 - Document all costs in Finance Board
 - Document all activities in Sig. Events Board
 - Update ESF/Situation Report Board

Incident Objectives

State EOC

1. Respond to resource requests and tasking within 30 minutes of assignment.
2. Be prepared to support county response activities.
3. Conduct an active public awareness campaign throughout the severe weather event.
4. Develop a plan for post-event impact assessment and recovery activities.
5. Monitor resource use and develop a demobilization plan for the release of resources as the situation allows.

Emergency Services

1. Coordinate with SERT partners to mobilize life safety resources when requested throughout event.
2. Maintain catalog of available state law enforcement mission packages to support local safety and security measures throughout the event.

RCC's

1. Support local government preparation, response, and recovery efforts for the duration of the event. Mission priorities are life saving, rescue, evacuation, life sustaining power generation and transportation and traffic control.
2. Review and validate assignment of mission requests received by RCC from the State EOC. Execute missions within prescribed timelines.
3. Track all RCC resources and expenditures.
4. Manage conference calls, produce branch tactical plan, situation reports and manage resources.

Business EOC

1. Maintain situational awareness of state and private sector partner status and actions throughout the event.
2. Process Re-Entry Certifications within 30 minutes throughout the event.

Incident Objectives

Communications

1. Efficiently manage statewide talkgroups for effective allocation in support of anticipated local, regional, and state level operations.
2. Proactively evaluate primary and auxiliary operational communications needs based on forecasted weather, anticipated communication degradations, and anticipated surges in operations.
3. Coordinate with SERT partners to quickly mobilize communication resources when requested throughout the event.

Infrastructure

1. Monitor and disseminate information to SERT partners and counties regarding power outages/disruptions/restorations and road closures throughout the event.
2. Coordinate with Risk Management to evaluate impacts to structures and disseminate relevant information to SERT partners and county officials throughout the event.

Risk Management

1. Develop and disseminate impact forecast and analysis products for impacted areas.
2. Monitor and maintain WebEOC for resource requests.

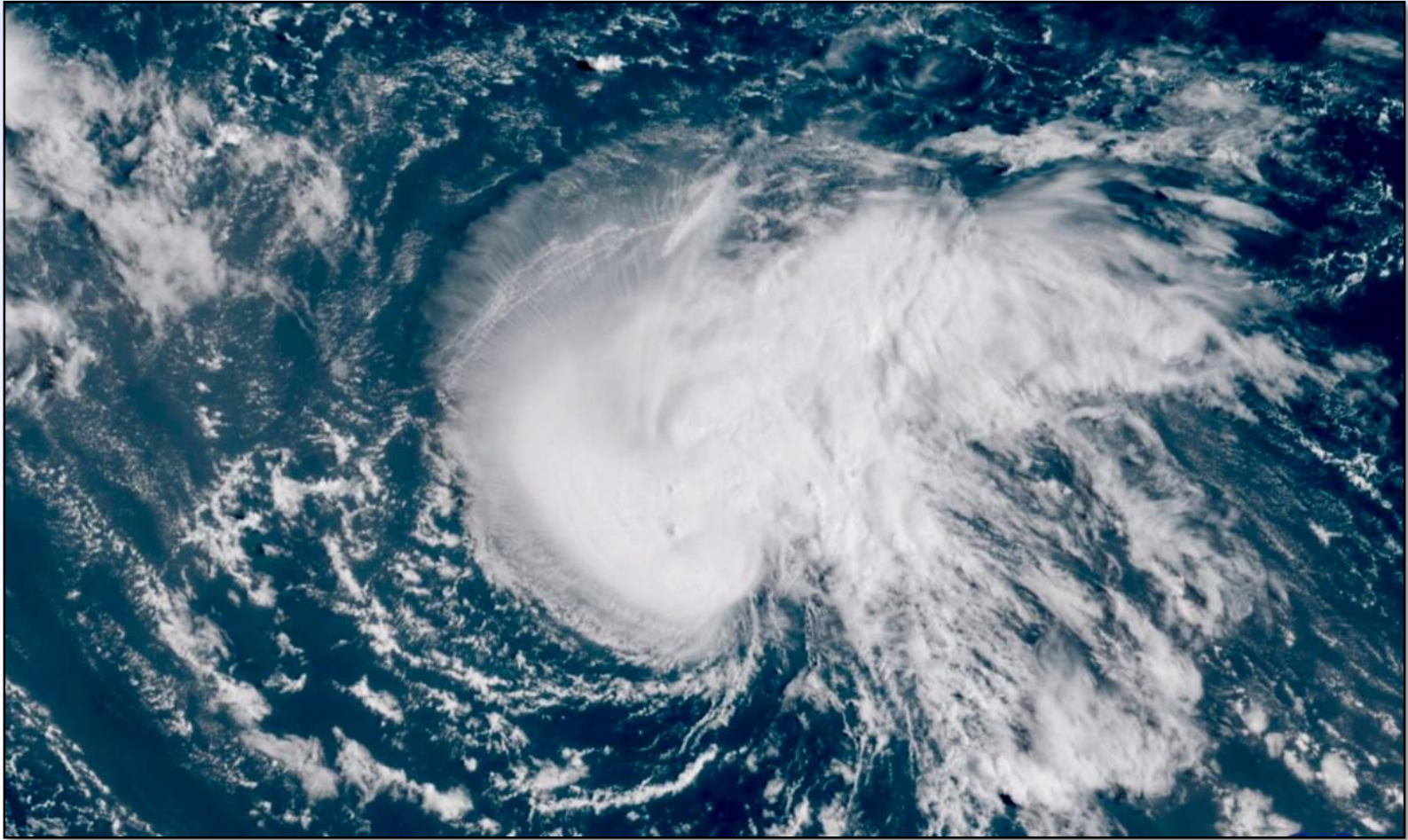
Logistics

1. Respond to resource requests and tasking within 30 minutes of assignment.
2. Provide equipment and commodities in support of impacted communities as quickly as possible.
3. Coordinate travel, lodging and meals for State EOC staff as needed.

Human Services

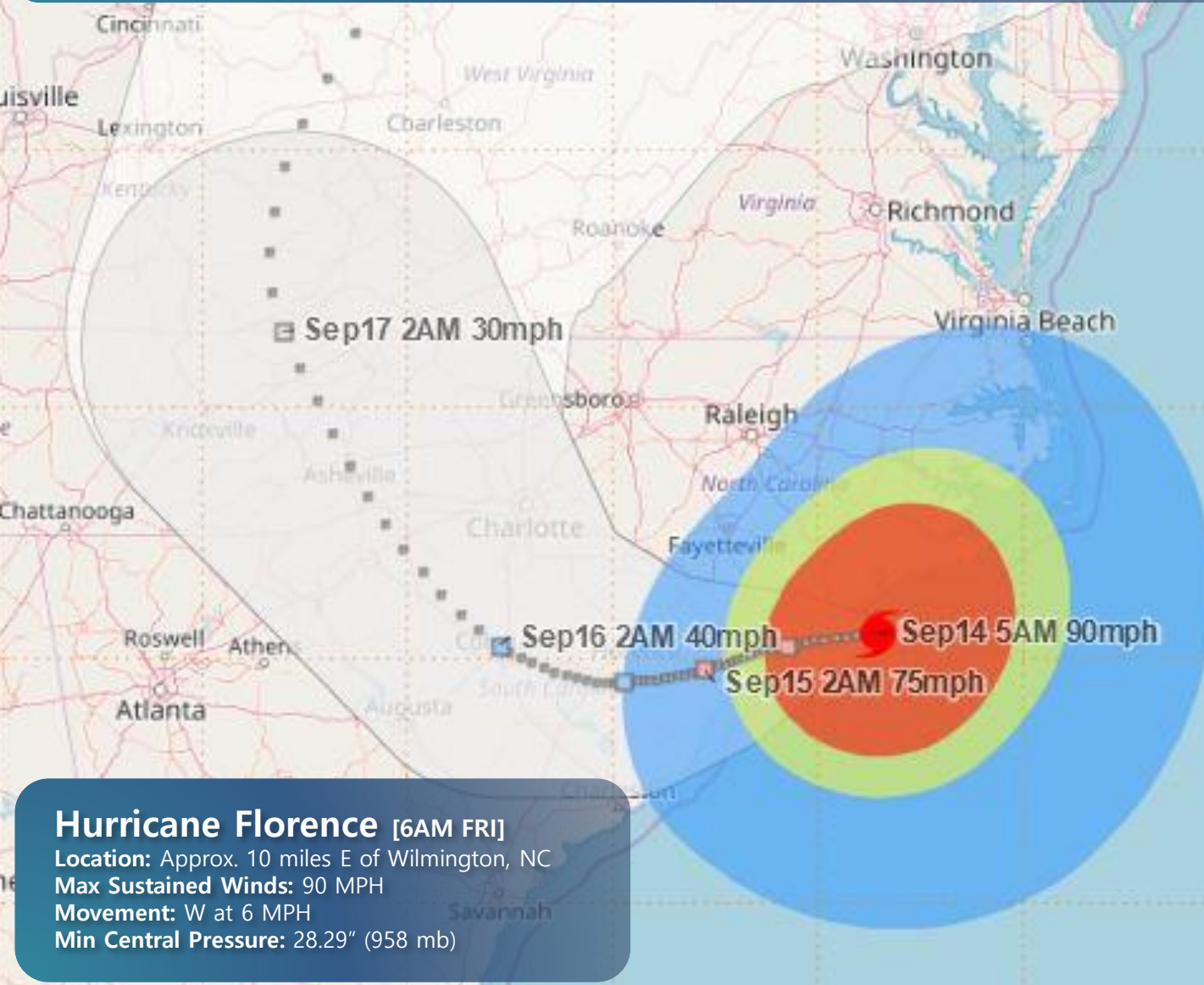
1. Execute plans for mass care and sheltering of evacuees, affected persons, pets and commercial animals.

Weather



HURRICANE FLORENCE

September 14, 2018 – 5AM



Hurricane Florence [6AM FRI]

Location: Approx. 10 miles E of Wilmington, NC

Max Sustained Winds: 90 MPH

Movement: W at 6 MPH

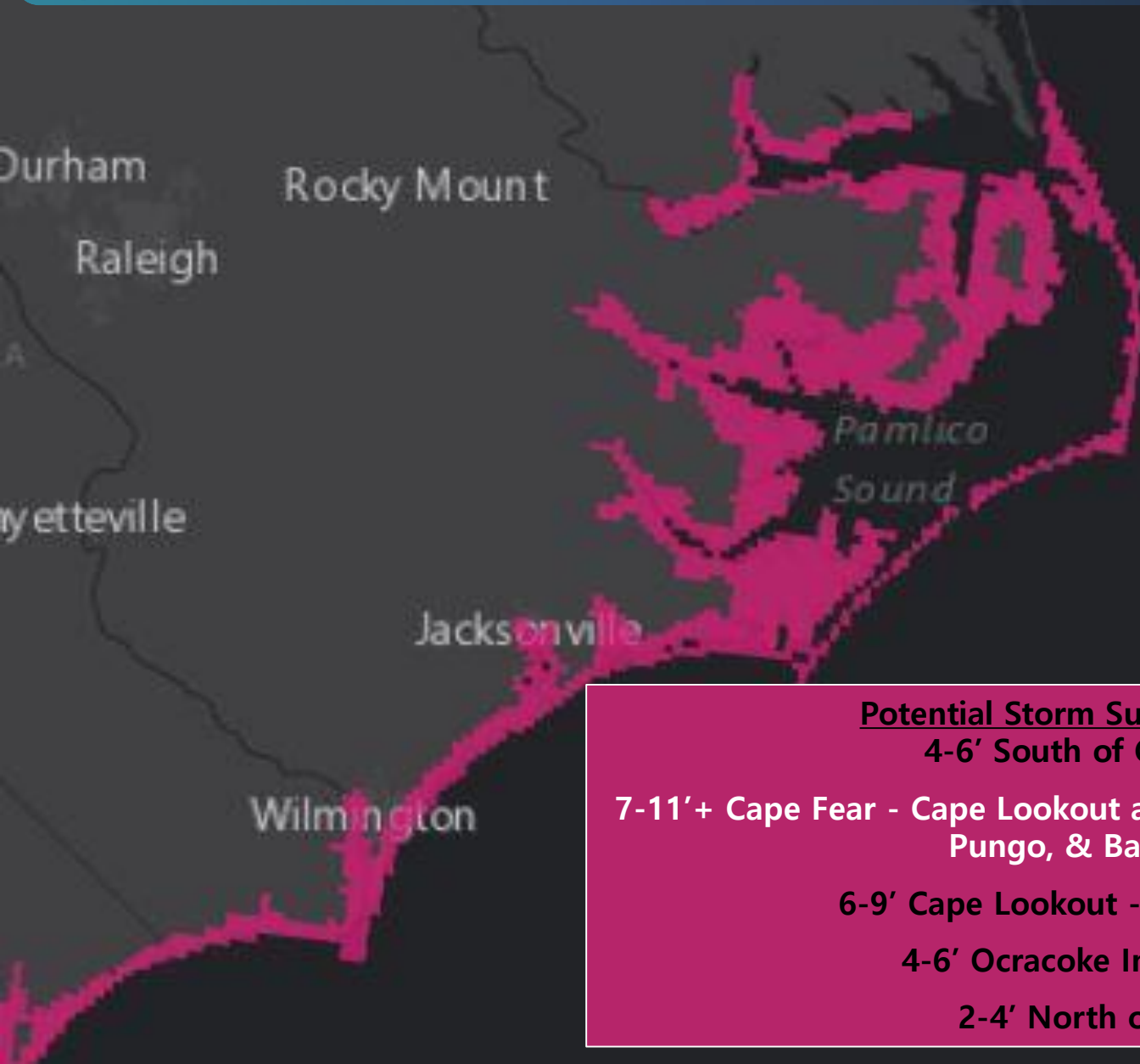
Min Central Pressure: 28.29" (958 mb)

Wind Speed		
≥ 34 kt / 39 mph	≥ 50 kt / 58 mph	≥ 64 kt / 74 mph
Tropical Storm	Strong Tropical Storm	Hurricane

The NHC Track Forecast Cone is NOT an Impact Cone
Significant impacts will be felt far from the center of the storm

STORM SURGE WARNING

September 14, 2018 – 5AM



Storm surge is not just an ocean-front phenomenon. Surge impacts can occur away from the coast, especially along/near any tidally connected streams, creeks, rivers, waterways, and bays.

Potential Storm Surge Amounts:

4-6' South of Cape Fear

7-11'+ Cape Fear - Cape Lookout and along the Neuse, Pamlico, Pungo, & Bay Rivers

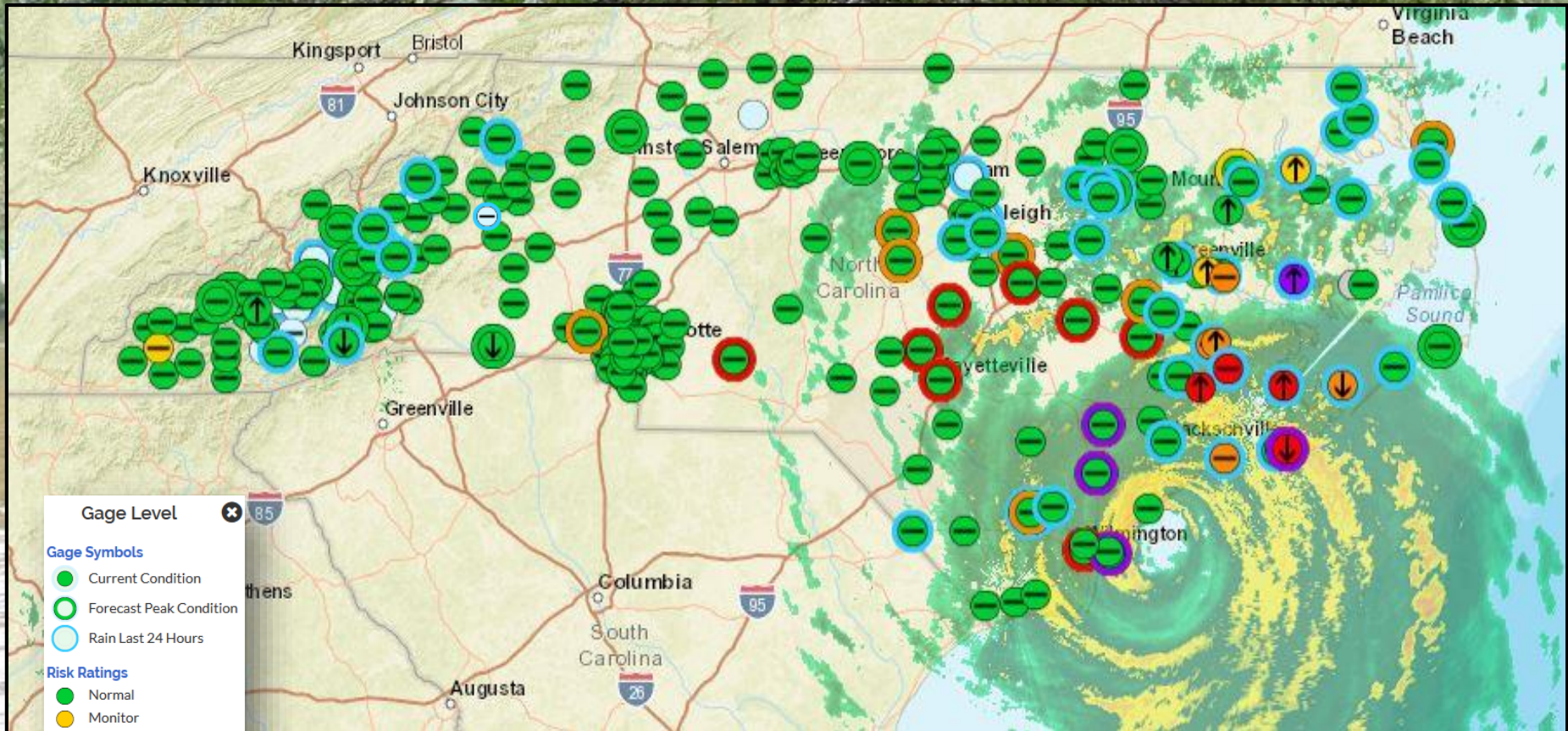
6-9' Cape Lookout - Ocracoke Inlet

4-6' Ocracoke Inlet – Salvo

2-4' North of Salvo

RIVER FLOOD OUTLOOK

September 14, 2018 – 5AM



- Gage Level**
- Gage Symbols**
- Current Condition
 - Forecast Peak Condition
 - Rain Last 24 Hours
- Risk Ratings**
- Normal
 - Monitor
 - Minor Flooding
 - Moderate Flooding
 - Major Flooding
 - Not Risk Rated
 - Out of Service
- Trend**
- Rising
 - Falling
 - Constant

FLASH FLOODING POTENTIAL

September 14, 2018 – 5AM

NOAA/NWS/NCEP/WPC



High Risk Days are Rare, Dangerous, Significant, and Impactful



Friday



Saturday

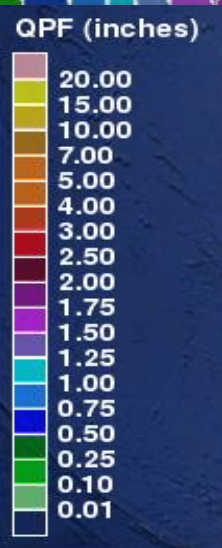
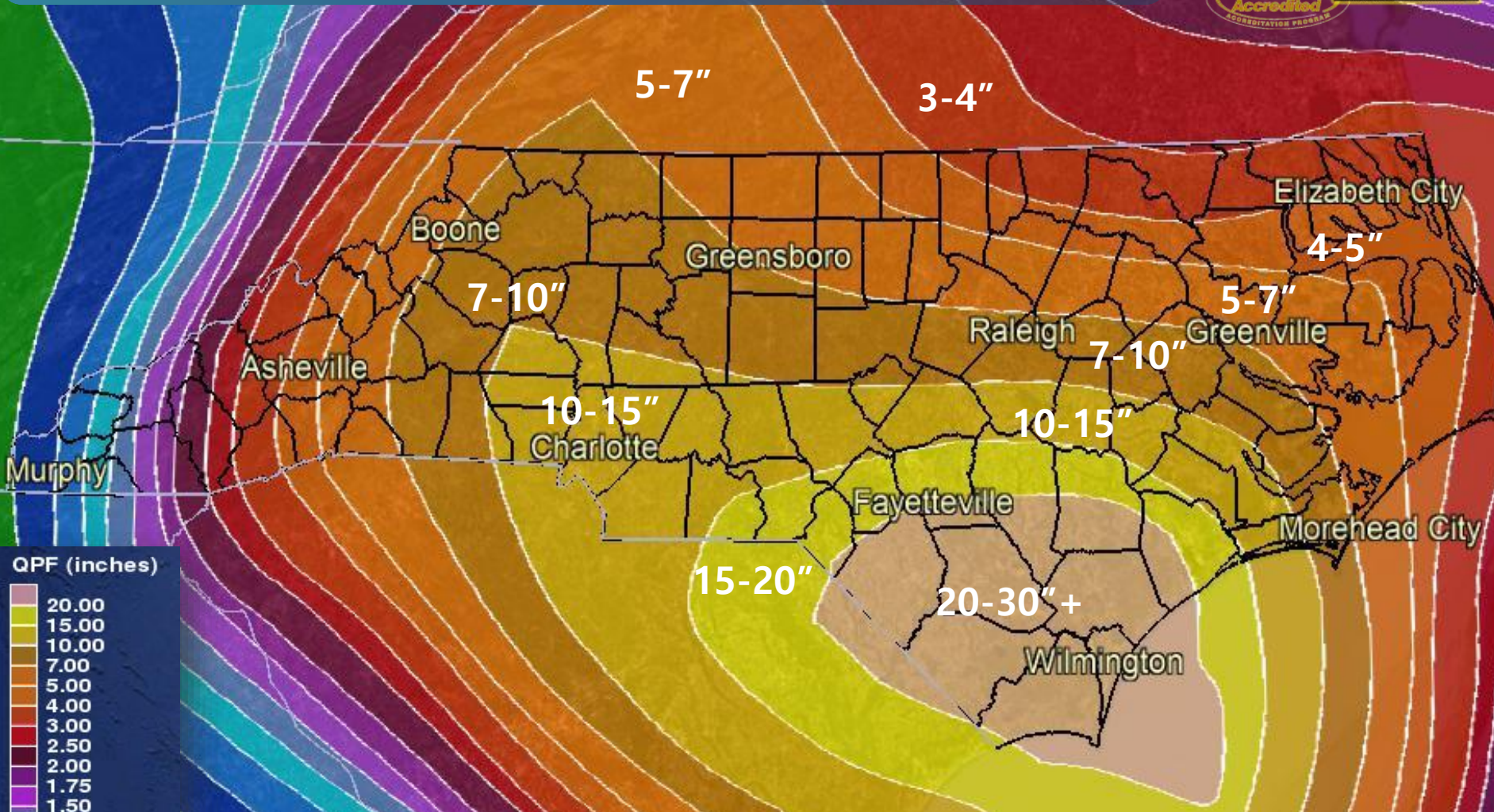


Sunday

5%: Marginal	20%: Moderate
10%: Slight	50%: High

72-HOUR RAINFALL FORECAST

8AM September 14, 2018 to 8AM September 17, 2018



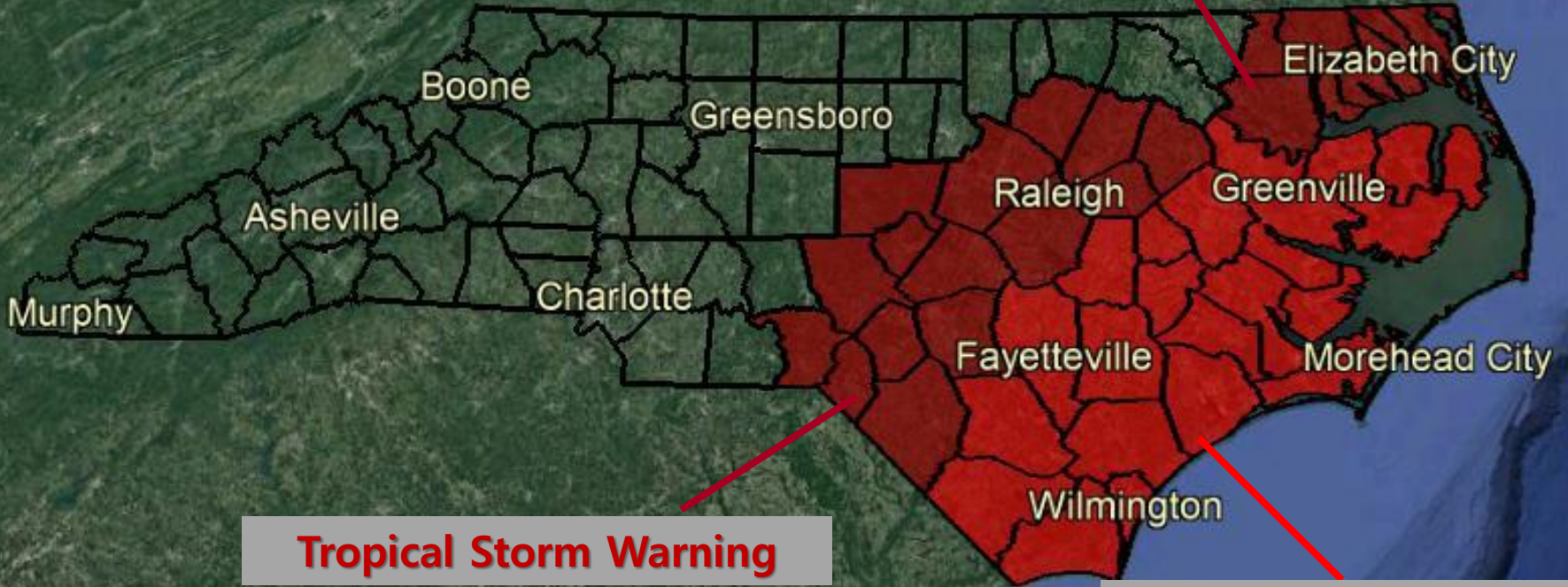
Rainfall amounts shown are averages, meaning locally higher amounts likely.
This graphic does not include rain that fell across Coastal NC on Thursday;
Heaviest rain across eastern NC expected Thursday – Saturday Night.
Heaviest rain across western NC expected Saturday – Monday.

CURRENT WATCHES/WARNINGS

September 14, 2018 – 5AM



Tropical Storm Warning



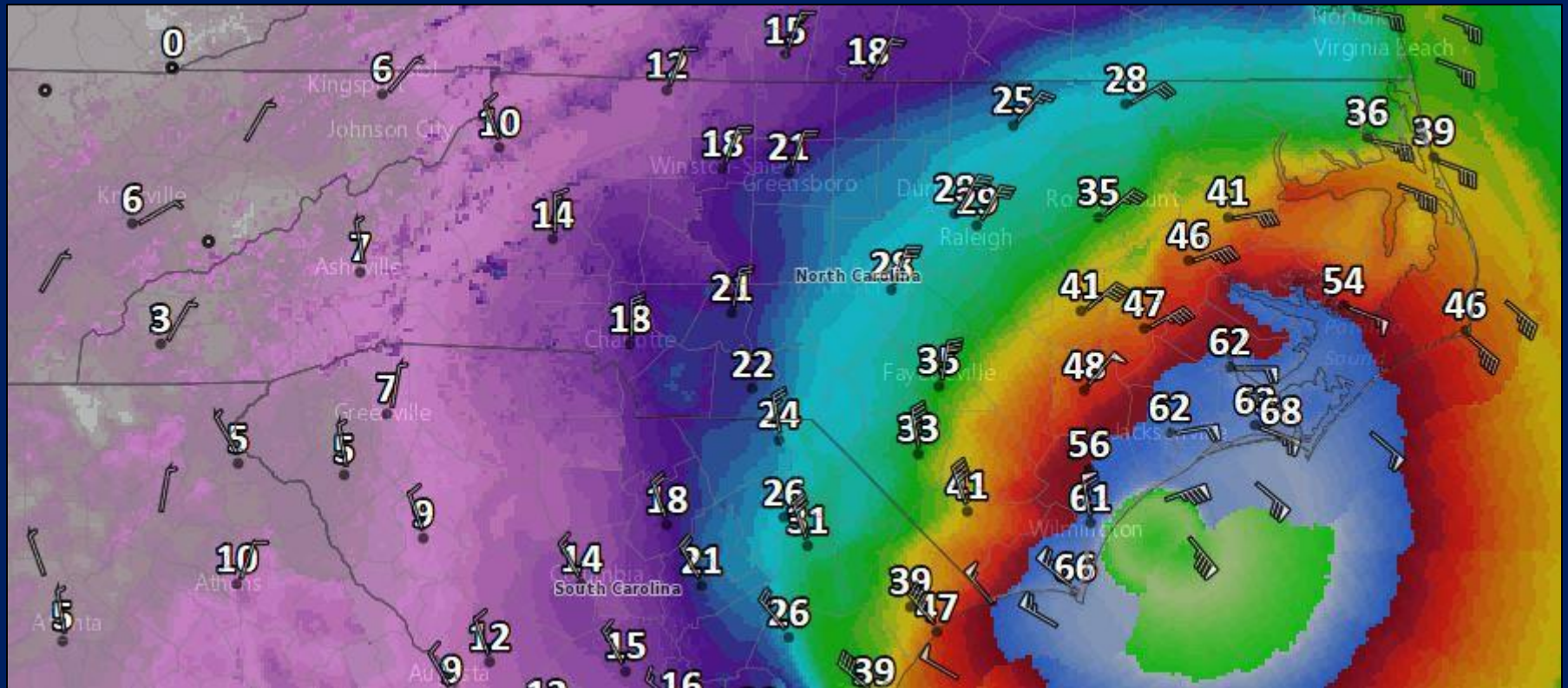
Tropical Storm Warning

Hurricane Warning

Much of the state is under a Flash Flood Watch, with Flash Flood Warnings in effect for much of Coastal NC

SUSTAINED WIND FORECAST

Forecast for 7AM September 14

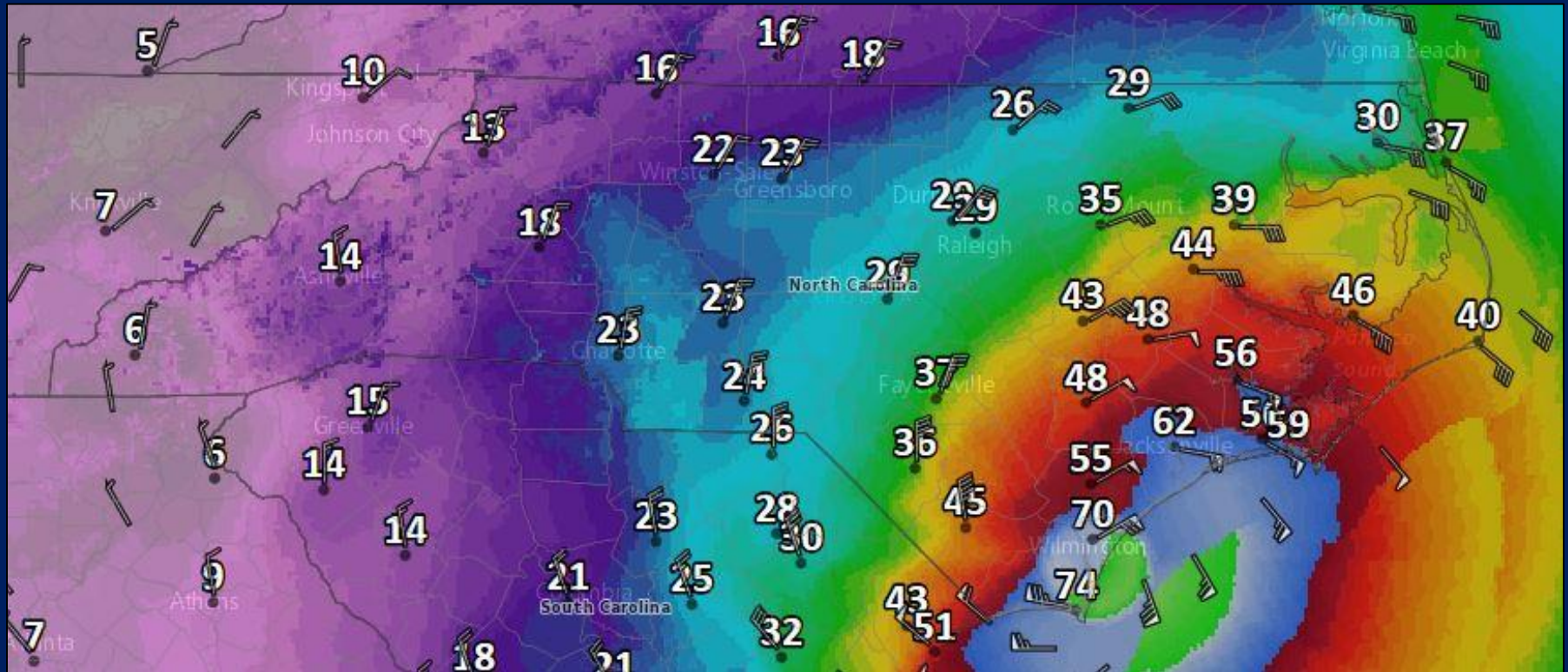


**Tropical Storm Force Winds begin at 39 MPH
Stronger wind gusts are likely**

As of 5AM September 14

SUSTAINED WIND FORECAST

Forecast for 12PM September 14

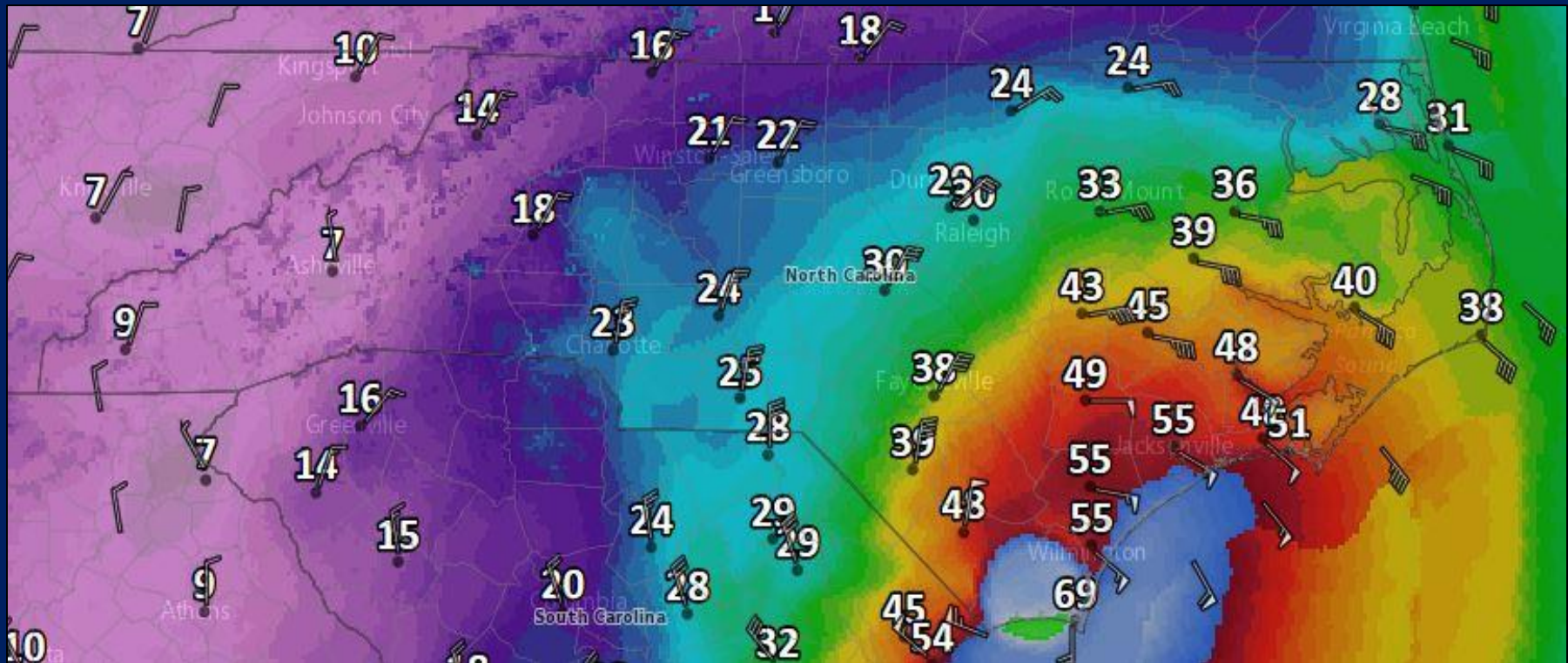


**Tropical Storm Force Winds begin at 39 MPH
Stronger wind gusts are likely**

As of 5AM September 14

SUSTAINED WIND FORECAST

Forecast for 5PM September 14

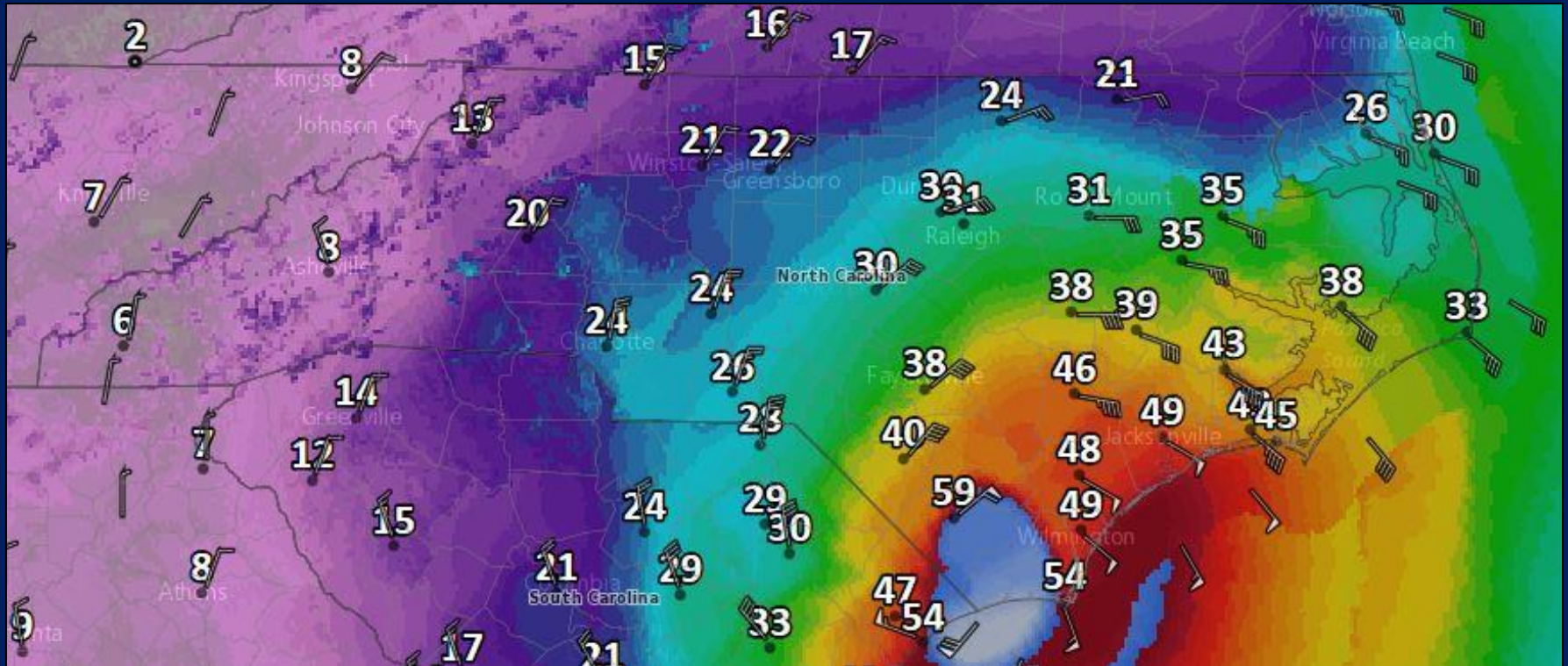


**Tropical Storm Force Winds begin at 39 MPH
Stronger wind gusts are likely**

As of 5AM September 14

SUSTAINED WIND FORECAST

Forecast for 10PM September 14

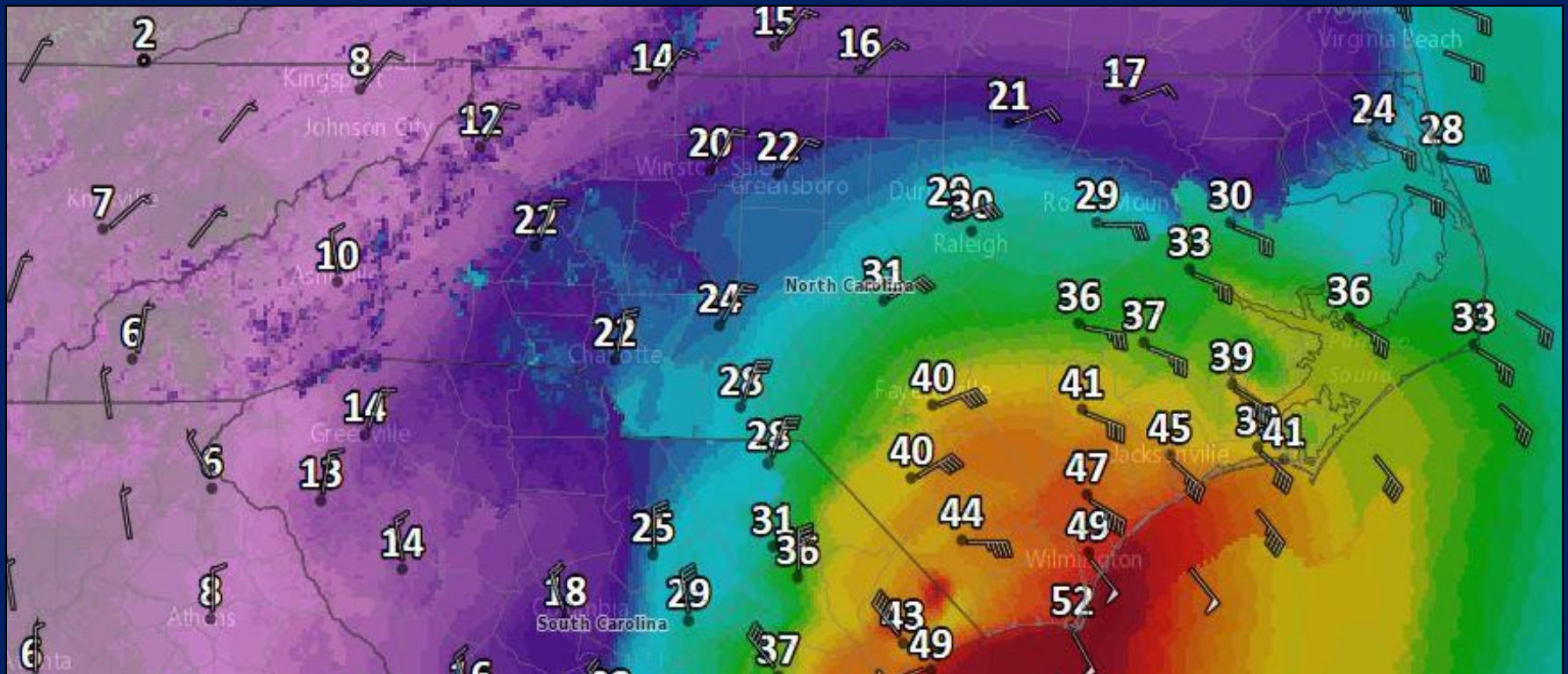


**Tropical Storm Force Winds begin at 39 MPH
Stronger wind gusts are likely**

As of 5AM September 14

SUSTAINED WIND FORECAST

Forecast for 3AM September 15

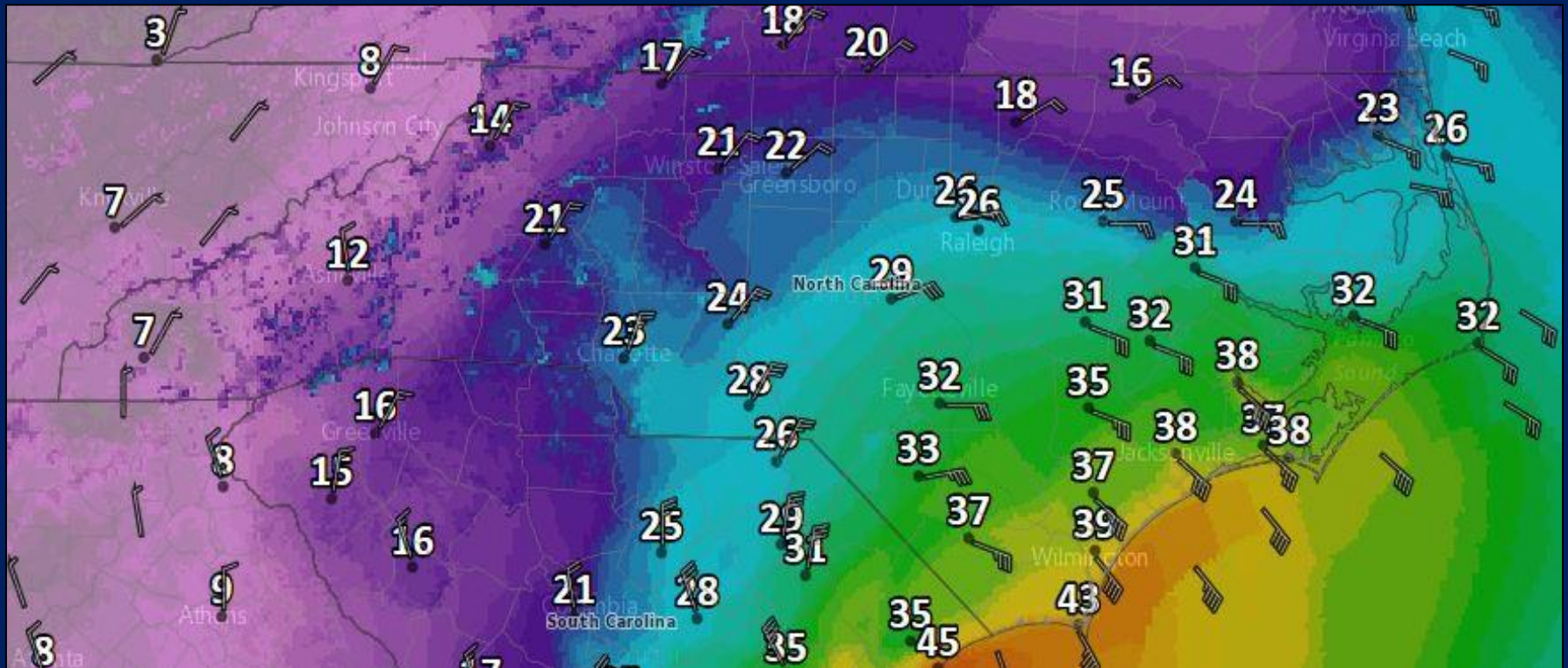


**Tropical Storm Force Winds begin at 39 MPH
Stronger wind gusts are likely**

As of 5AM September 14

SUSTAINED WIND FORECAST

Forecast for 8AM September 15

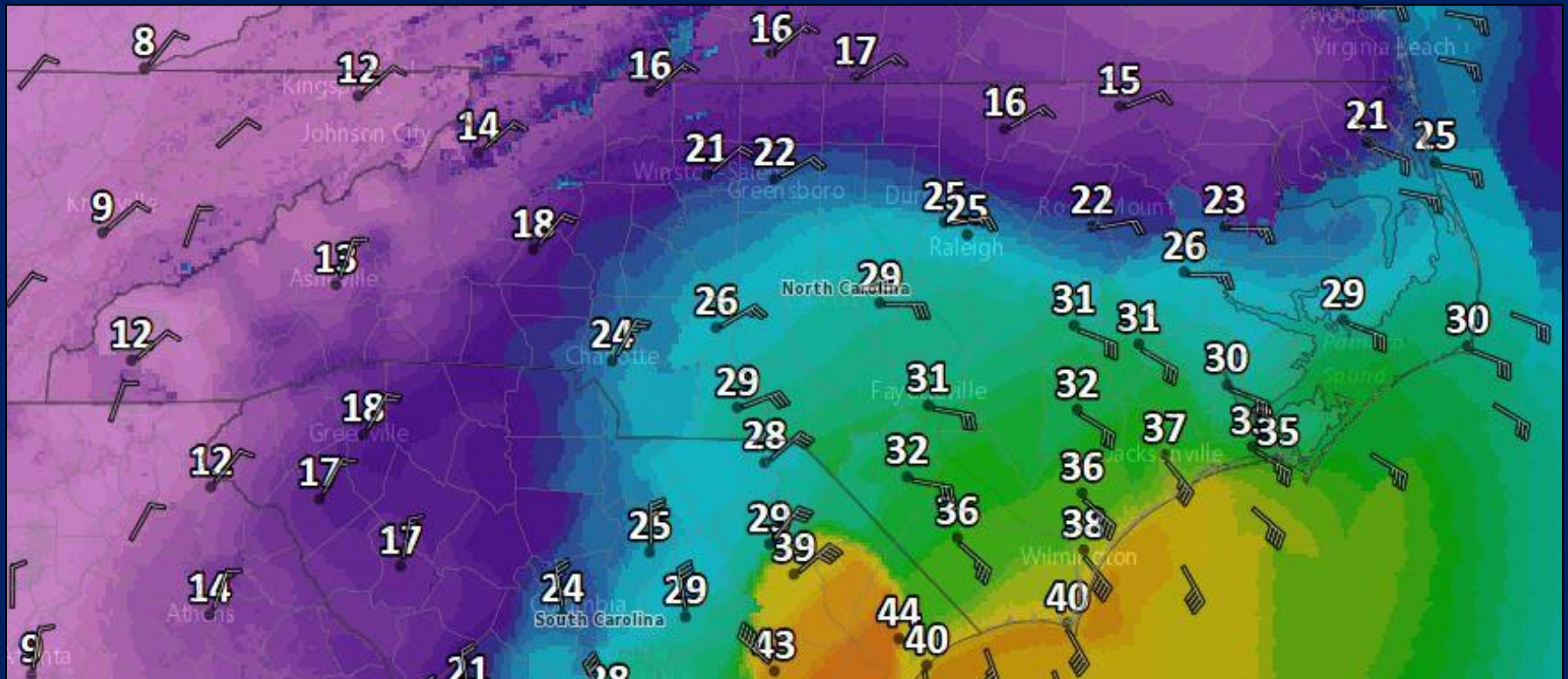


**Tropical Storm Force Winds begin at 39 MPH
Stronger wind gusts are likely**

As of 5AM September 14

SUSTAINED WIND FORECAST

Forecast for 1PM September 15

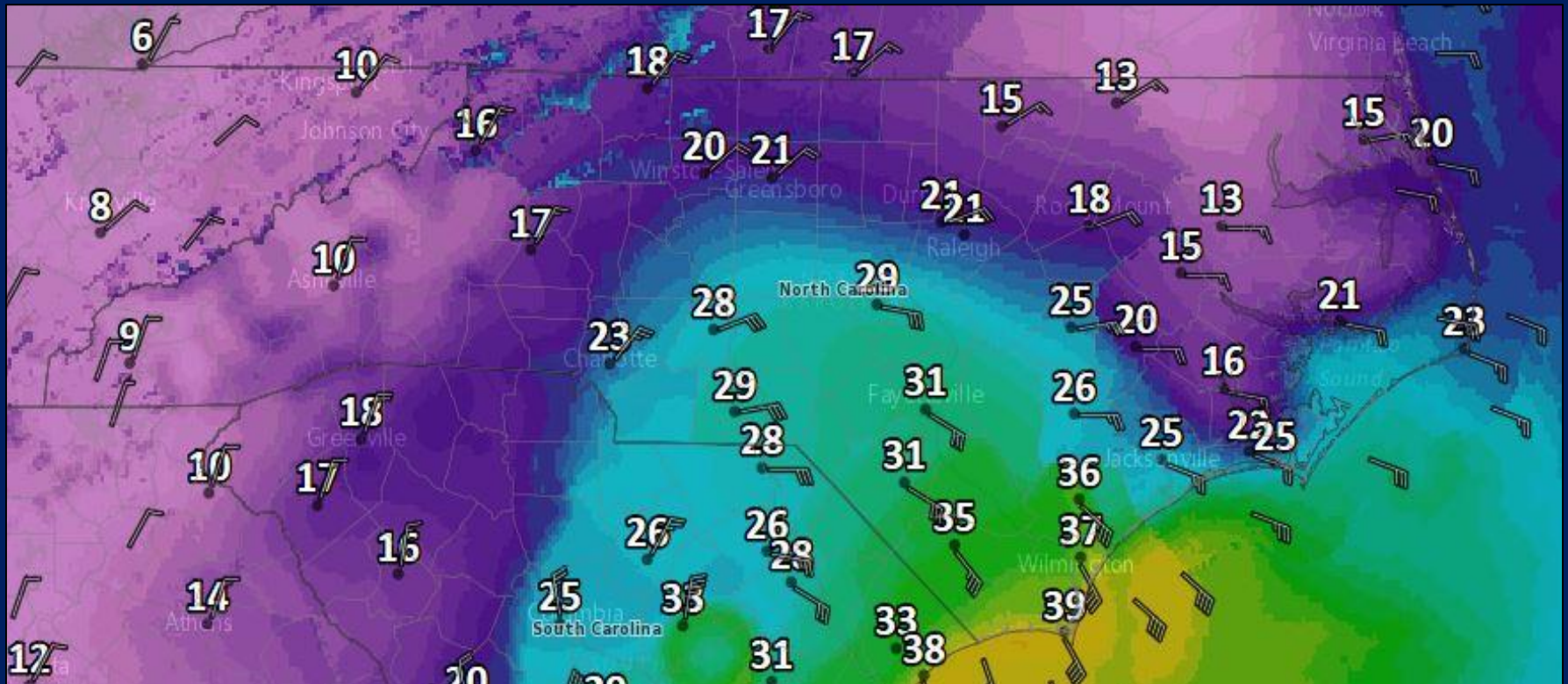


**Tropical Storm Force Winds begin at 39 MPH
Stronger wind gusts are likely**

As of 5AM September 14

SUSTAINED WIND FORECAST

Forecast for 8PM September 15

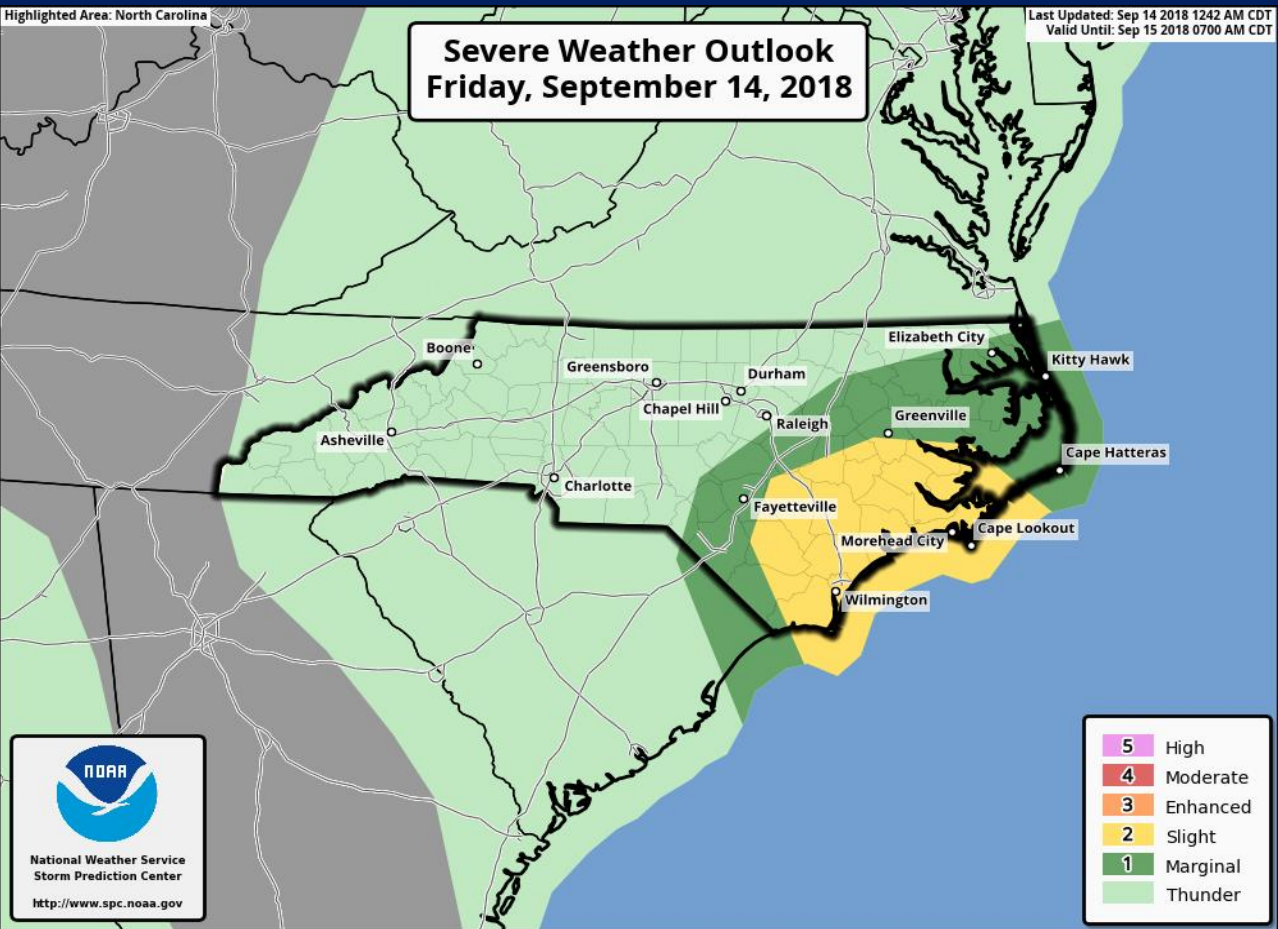


**Tropical Storm Force Winds begin at 39 MPH
Stronger wind gusts are likely**

As of 5AM September 14

FRIDAY'S SEVERE STORM THREAT

STORM PREDICTION CENTER (VALID 8AM 9/14/18 – 8AM 9/15/18)



THUNDERSTORMS (no label)	1 - MARGINAL (MRGL)	2 - SLIGHT (SLGT)
No severe* thunderstorms expected	Isolated severe thunderstorms possible	Scattered severe storms possible
Lightning/flooding threats exist with <u>all</u> thunderstorms	Limited in duration and/or coverage and/or intensity	Short-lived and/or not widespread, isolated intense storms possible
<ul style="list-style-type: none"> Winds to 40 mph Small hail 	<ul style="list-style-type: none"> Winds 40-60 mph Hail up to 1" Low tornado risk 	<ul style="list-style-type: none"> One or two tornadoes Reports of strong winds/wind damage Hail ~1", isolated 2"
3 - ENHANCED (ENH)	4 - MODERATE (MDT)	5 - HIGH (HIGH)
Numerous severe storms possible	Widespread severe storms likely	Widespread severe storms expected
More persistent and/or widespread, a few intense	Long-lived, widespread and intense	Long-lived, very widespread and particularly intense
<ul style="list-style-type: none"> A few tornadoes Several reports of wind damage Damaging hail, 1 - 2" 	<ul style="list-style-type: none"> Strong tornadoes Widespread wind damage Destructive hail, 2" + 	<ul style="list-style-type: none"> Tornado outbreak Derecho

Tornadoes in tropical systems are typically weak and short-lived, but often do not offer much warning time.

HURRICANE FLORENCE

SEPTEMBER 14, 2018 – 5AM

ReadyNC

EMAP
Accredited
COORDINATED PROGRAM

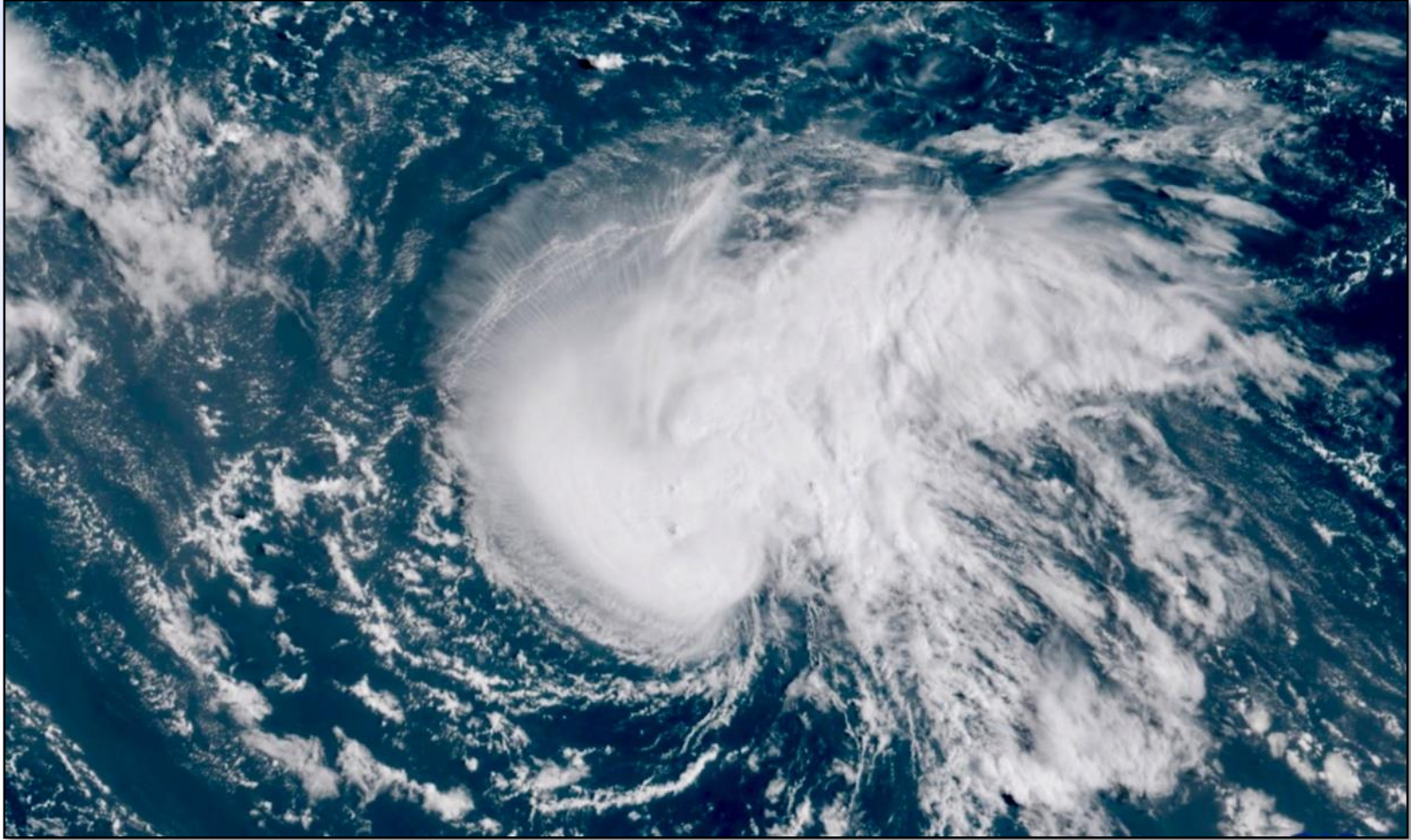


Key Takeaways:

- **“It cannot be emphasized enough that the most serious hazard associated with slow-moving Florence is extremely heavy rainfall, which will cause disastrous flooding that will be spreading inland through the weekend.” – NHC**
- **Rain:**
 - SE Coastal NC: An additional 20-25” (Isolated storm totals of 30-40”)
 - Remainder of NC: 5-10”; isolated totals to 15”
- **Storm Surge (occurring and will continue):**
 - Cape Fear – Cape Lookout (Pamlico, Neuse, Pungo, Bay Rivers): 7-11’+
 - Cape Lookout – Ocracoke Inlet: 6-9’
 - South of Cape Fear and Ocracoke Inlet - Salvo: 4-6’
 - Salvo - Duck: 2-4’
- **Wind:**
 - Hurricane-force winds are expected across portions of Coastal NC today
 - Tropical Storm-force winds are possible across much of the state through Sat



Situation Report



County Impacts

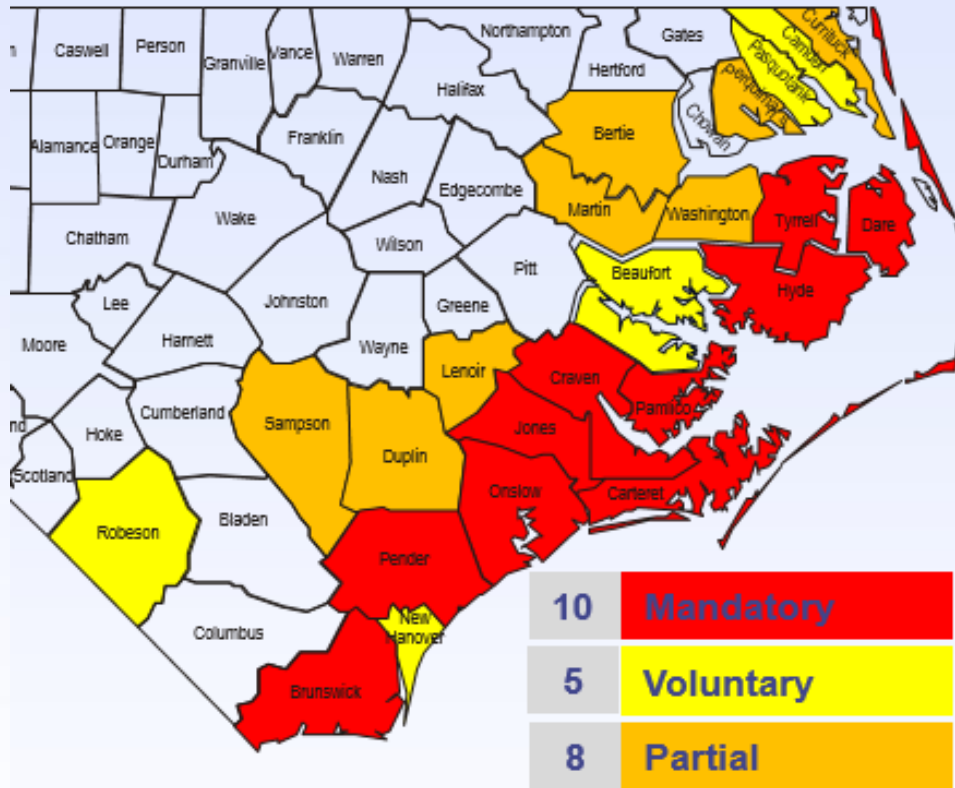
State of Emergency (75 of 100 counties):

- 33 in Eastern Branch
- 31 in Central Branch
- 11 in Western Branch

School Closings: 65 Districts closed Friday

Evacuations

Evacuations As of: 13 Sept, 5:30 PM



Executive Order #54 – Mandatory Evacuation for all islands in North Carolina

Shelters

Shelters opened: 157

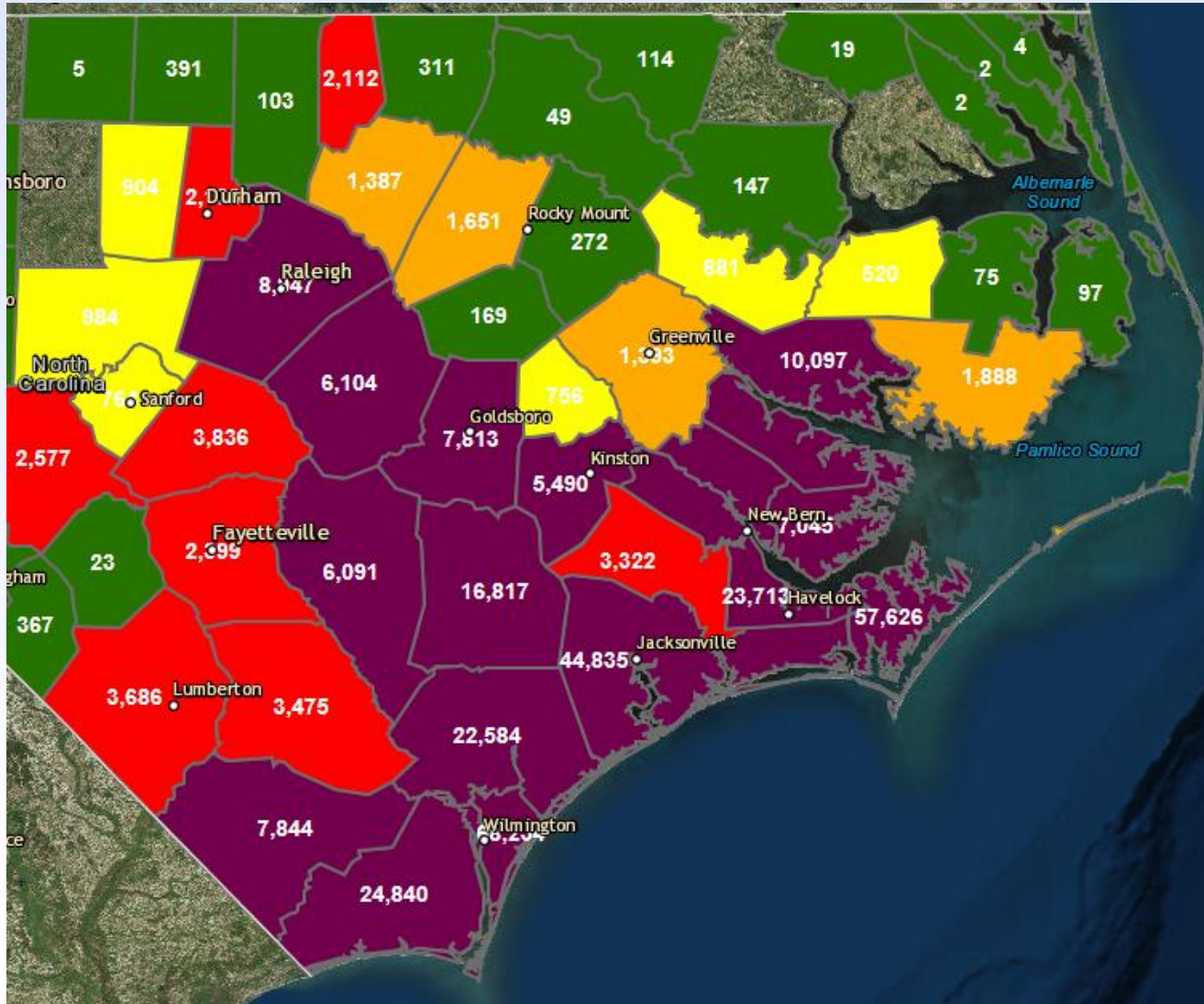
Pet Friendly: 29

Residents: 19,280 Capacity: 49,280

National Guard

2,800 soldiers activated and deployed across the state.

Power Outages



Legend

NC Sparta Power Outages

Outages

- > 5,000
- 2001 - 5,000
- 1001 - 2,000
- 500 - 1,000
- < 500
-

Total Outages:

Duke: 206,814
 Dominion: 2,107
 Co-Ops: 131,343

Total: 340,264

Overall SERT Response

Location/Resource	Status	Level
State EOC	Activated	1
Business EOC	Activated	Y
Recovery EOC	Activated	Y
Joint Information Center	Activated	Y
RCC East	Activated	Y
RCC Central	Activated	Y
RCC West	Activated	Y
EMAC	Activated	Y

Federal	Activated
FEMA IMAT	Y
FEMA Liaison Officer	Y
FEMA Incident Support Base	Y
FCO	Y

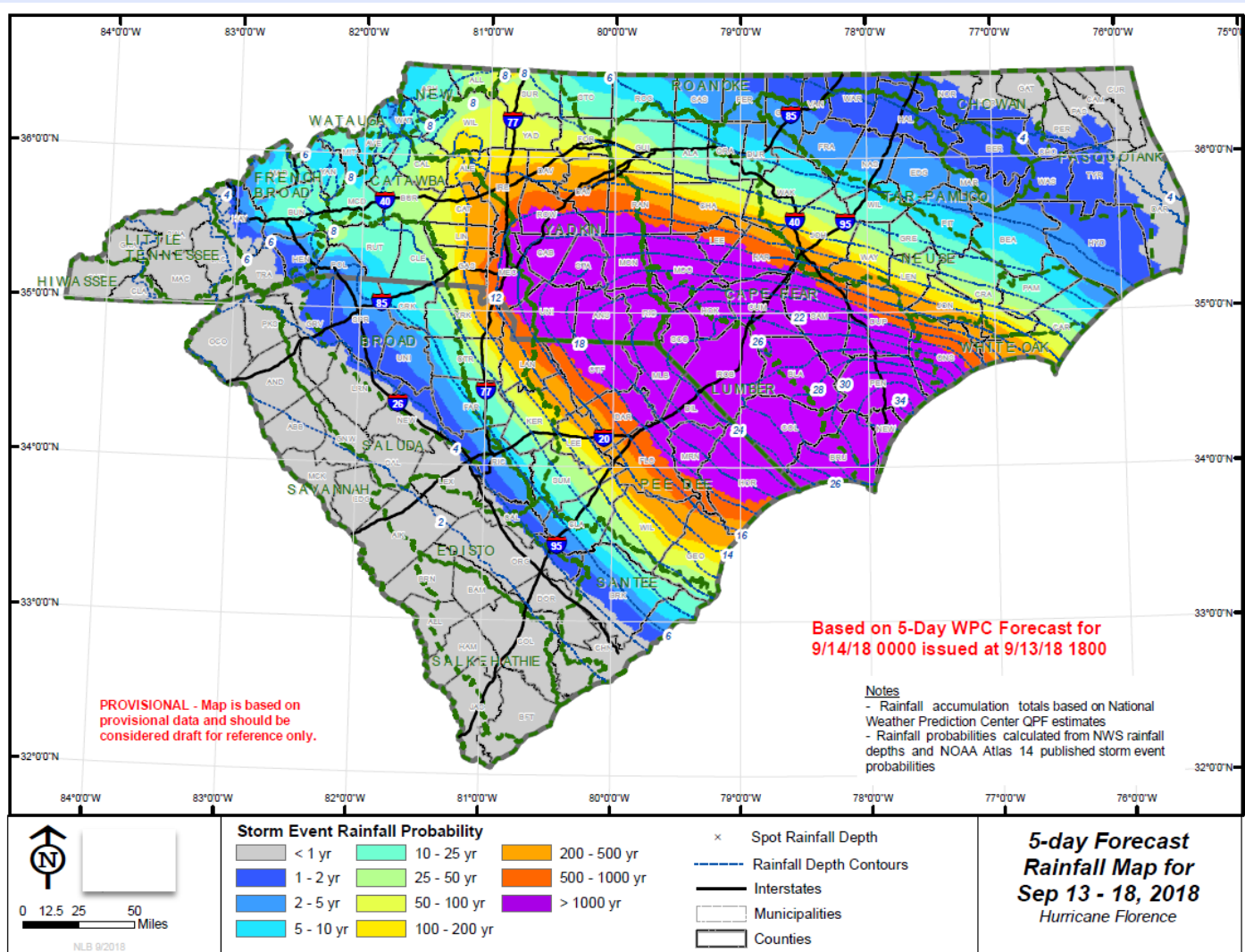
Federal Declaration
9/10/2018 – FEMA-3401-EM

Date	Executive Orders
9/7/2018	#51 - State of Emergency Declaration
9/7/2018	#52 - Temporary Suspension of Motor Vehicle Regulations
9/10/2018	#53 – Fuel Transportation Waiver
9/11/2018	#54 – Mandatory Evacuation for Coastal Islands

Around the Room

- Operations
- Logistics
- Recovery
- Risk Management
- Resiliency
- Administration/Finance
- Joint Information Center
- Business EOC
- FEMA

5-Day Rainfall



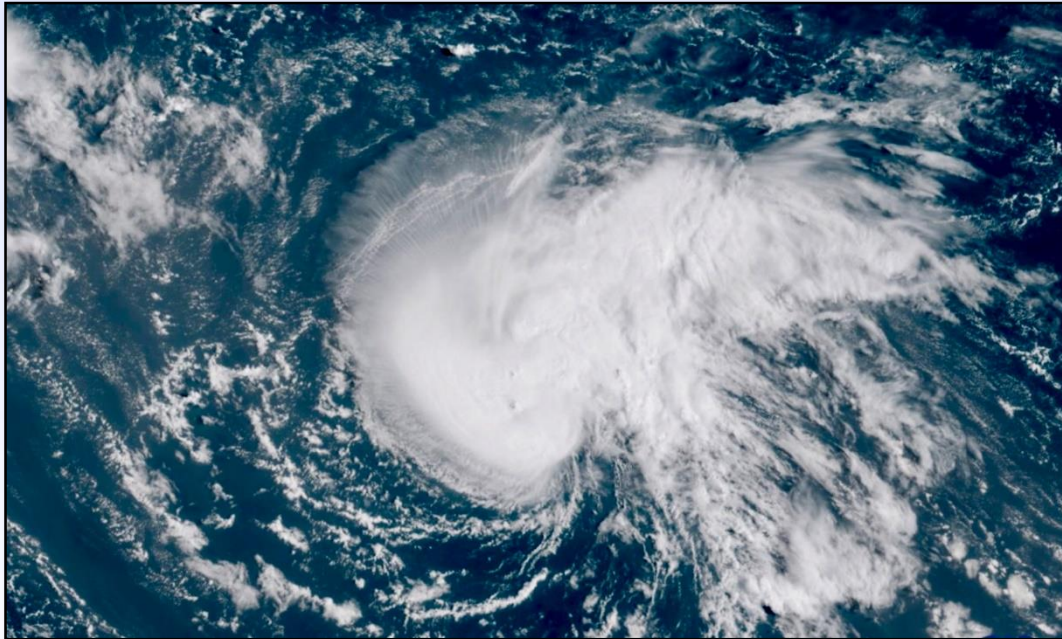
Around the Room

- Operations
- Logistics
- Recovery
- Risk Management
- Resiliency
- Administration/Finance
- Joint Information Center
- Business EOC
- FEMA

SERT Leader Guidance

1. Respond to Resource Requests w/in 30 Minutes.
2. Share Information.
3. Let Us Know if You See a Gap in the Response.
4. Have Faith in the Team!

North Carolina State Emergency Operations Center



Hurricane Florence
Friday 14, September 2018 – 0700